

Various outputs requested by the panel

A. Brandão

Appendix A: Figures 1 to 15 give the comparison plots of observed yearly proportions of the catch in each pack category to those under the Base case of MARAM/IWS/2024/SQUID/P4, the time-variant fishing proportions of MARAM/IWS/2024/SQUID/P5 and the assessment model of MARAM/IWS/2024/SQUID/P6 for a weight of 0.000625 applied to the penalty related to F_y .

Appendix B: Gives the STD file for the model run with a weight of 0.000625 applied to the penalty related to F_y .

Appendix C: Figure 1 gives the observed and the model estimated trend for the survey abundance indices for the West coast and South coast of South Africa for a weight of 0.000625 applied to the penalty related to F_y .

APPENDIX A

Fits to the proportions of the pack data

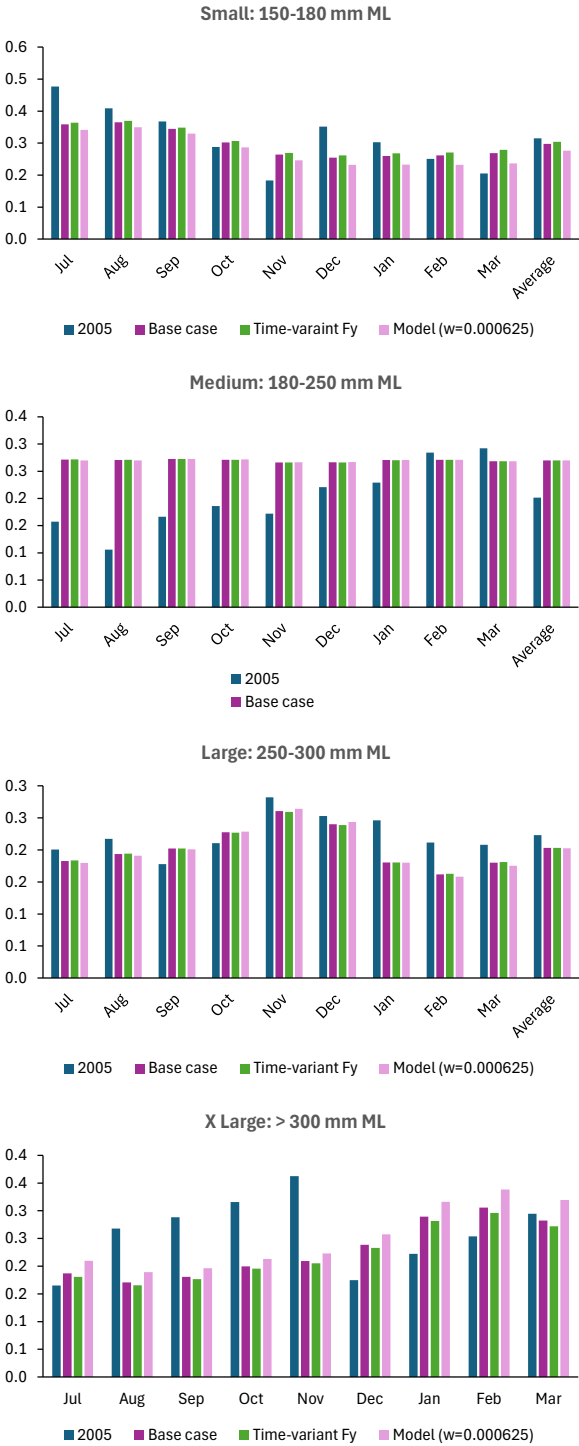


Figure 1. Comparison of the 2005 proportions by weight of each pack category in each month and the proportions generated under the Base case.

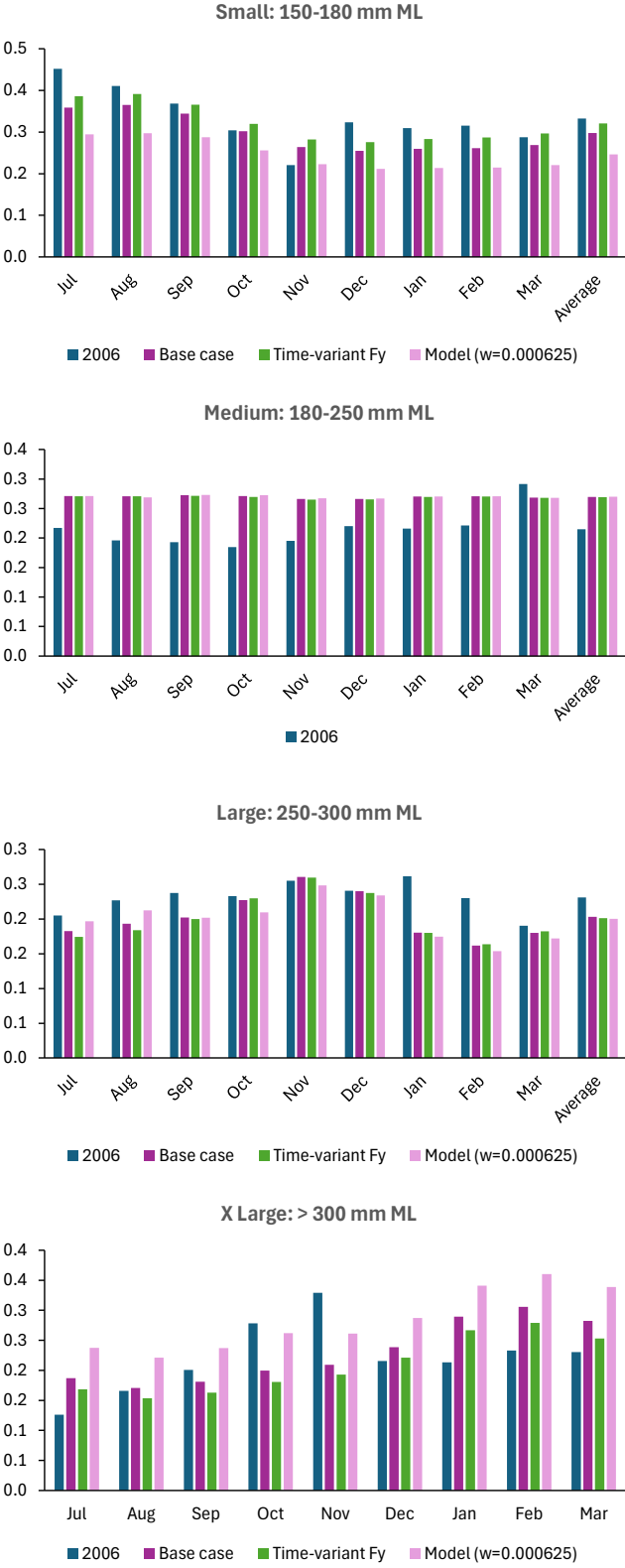


Figure 2. Comparison of the 2006 proportions by weight of each pack category in each month and the proportions generated under the Base case.

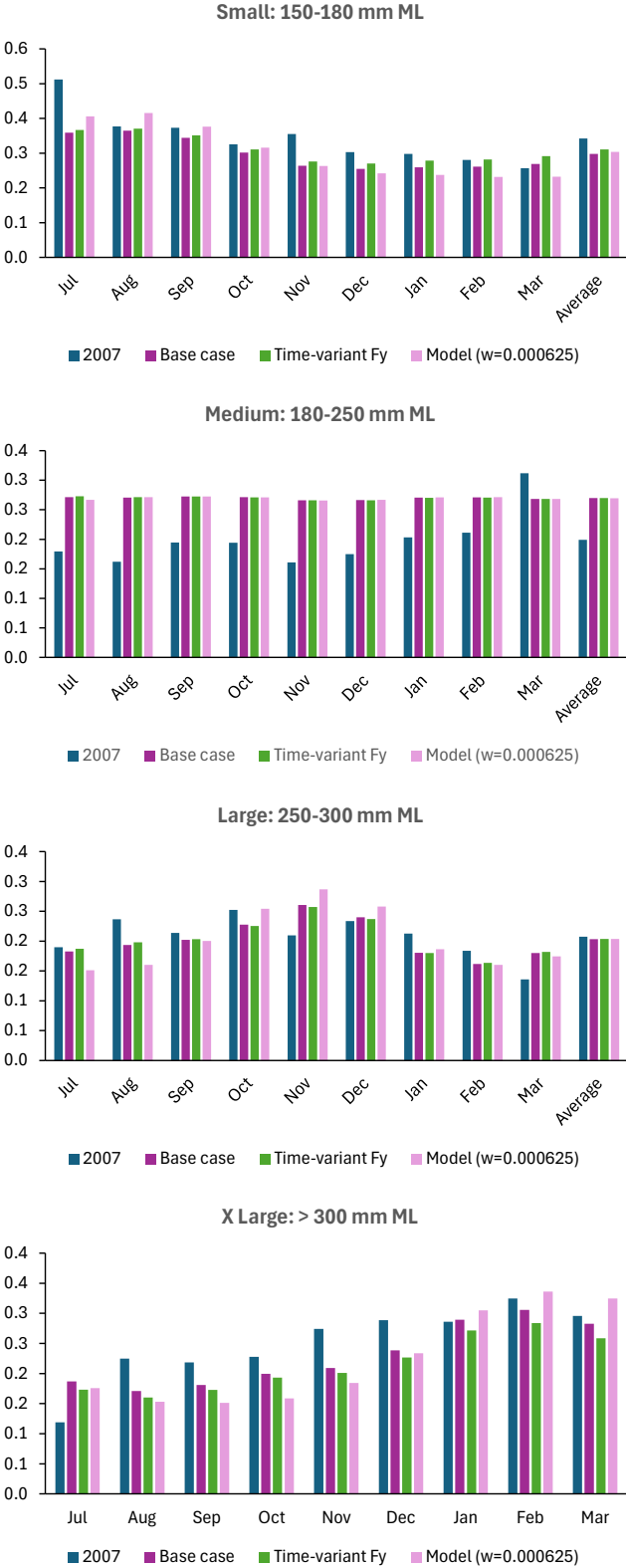


Figure 3. Comparison of the 2007 proportions by weight of each pack category in each month and the proportions generated under the Base case.

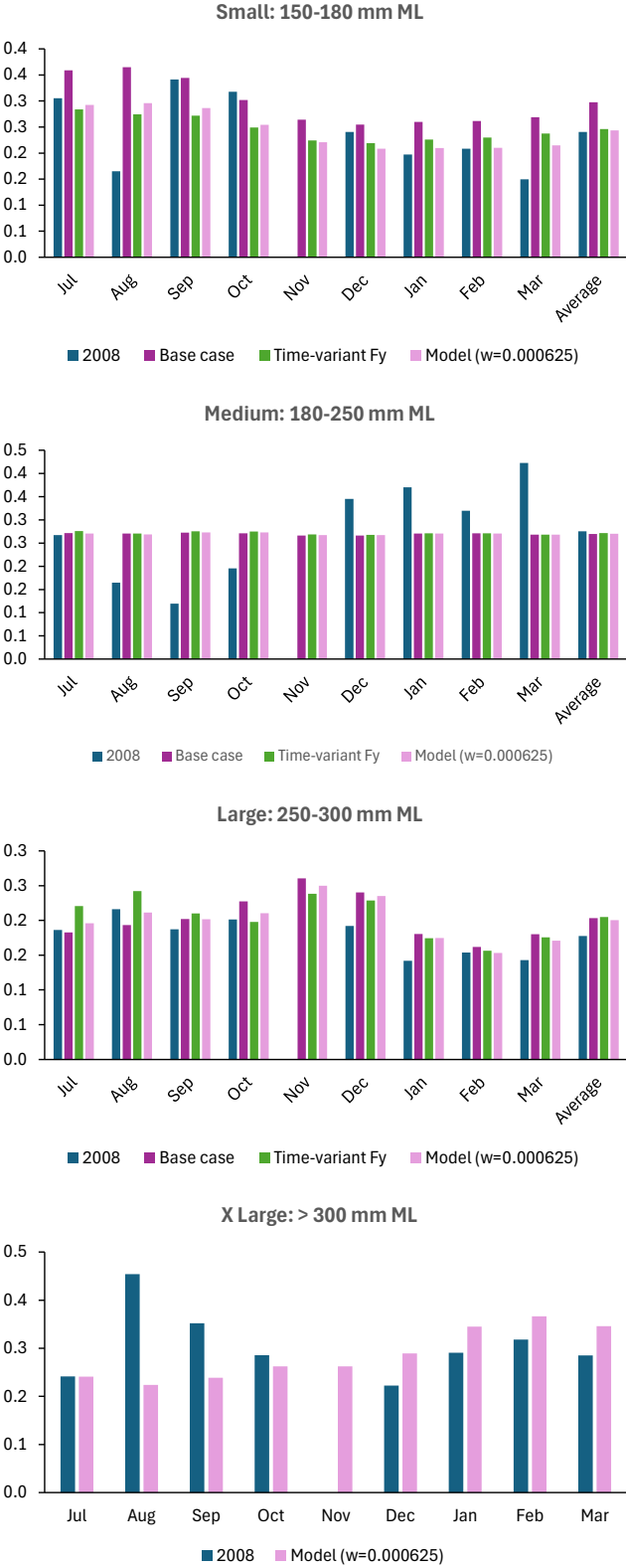


Figure 4. Comparison of the 2008 proportions by weight of each pack category in each month and the proportions generated under the Base case.

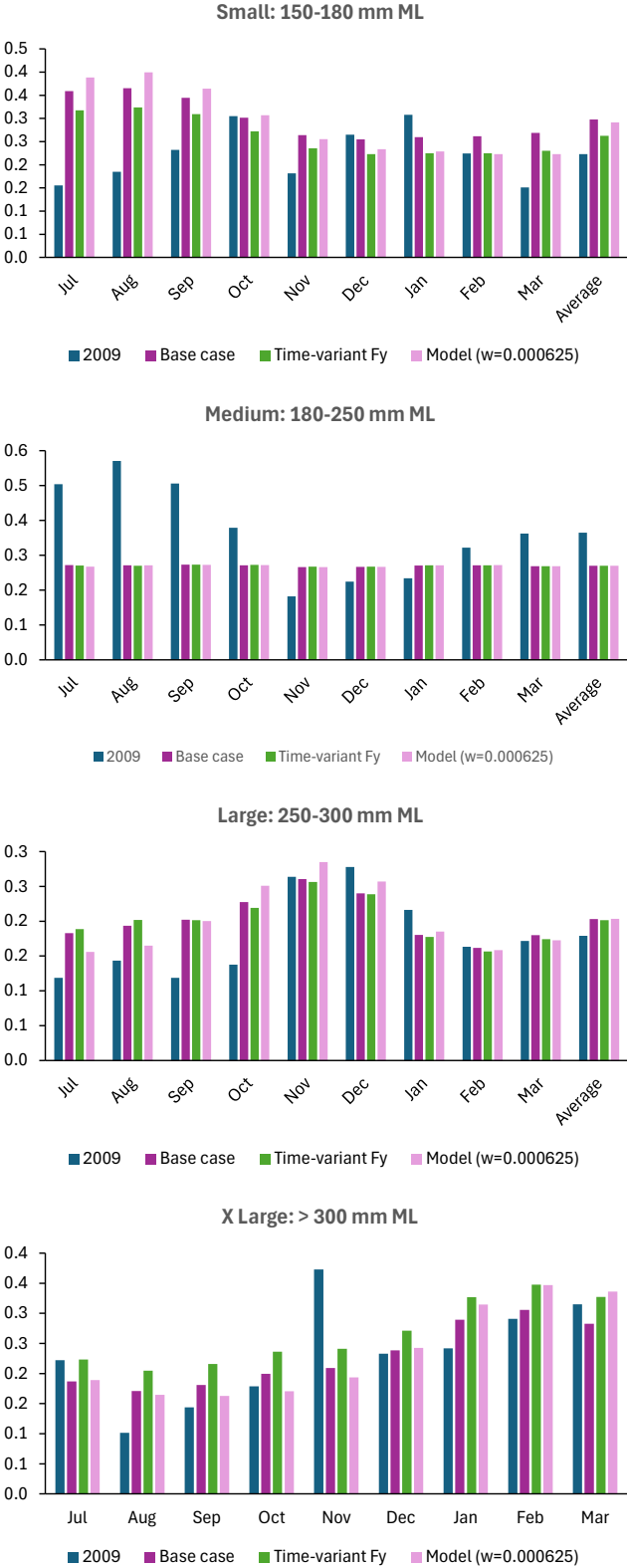


Figure 5. Comparison of the 2009 proportions by weight of each pack category in each month and the proportions generated under the Base case.

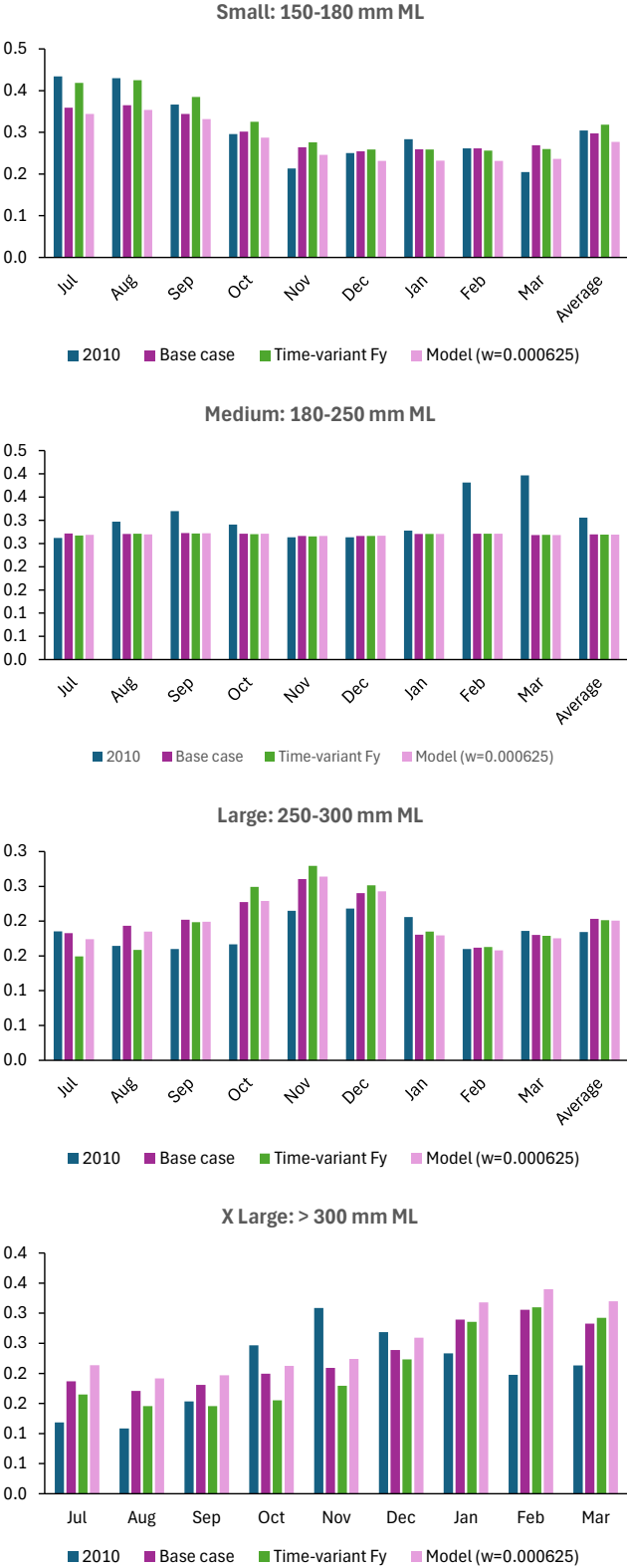


Figure 6. Comparison of the 2010 proportions by weight of each pack category in each month and the proportions generated under the Base case.

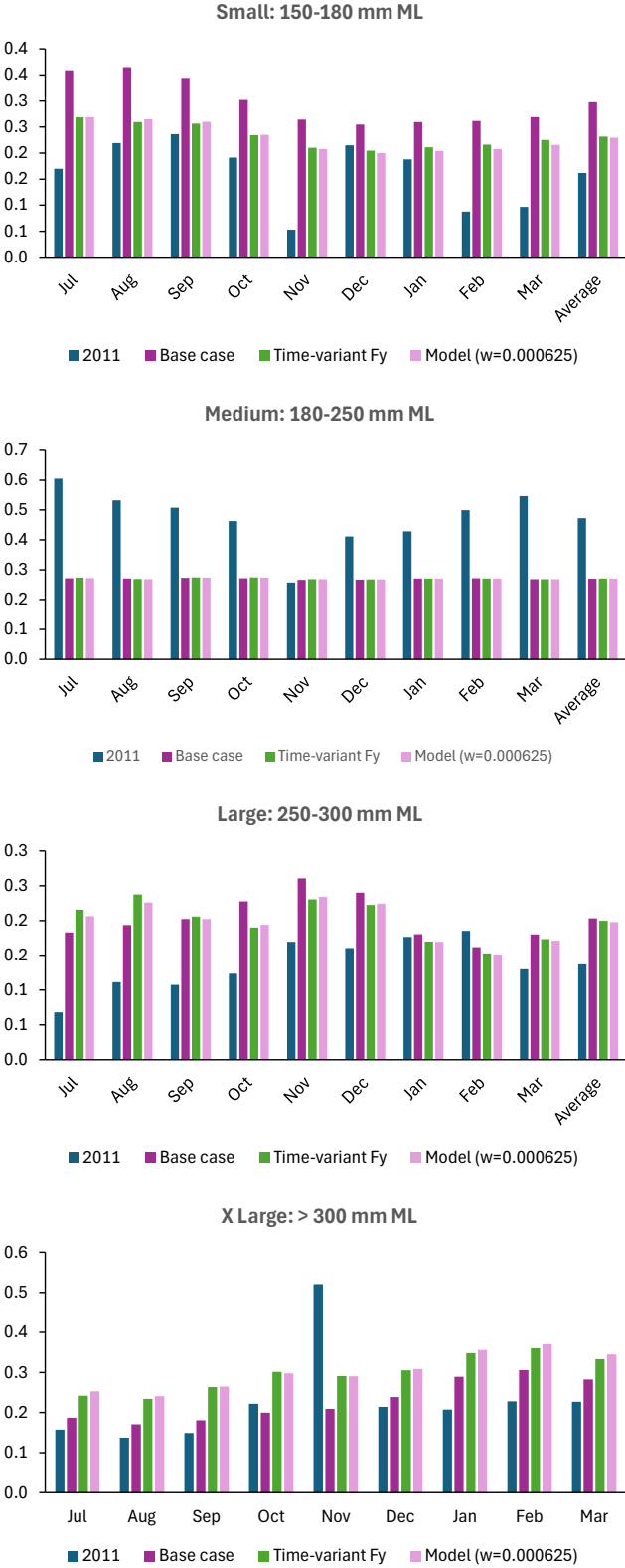


Figure 7. Comparison of the 2011 proportions by weight of each pack category in each month and the proportions generated under the Base case.

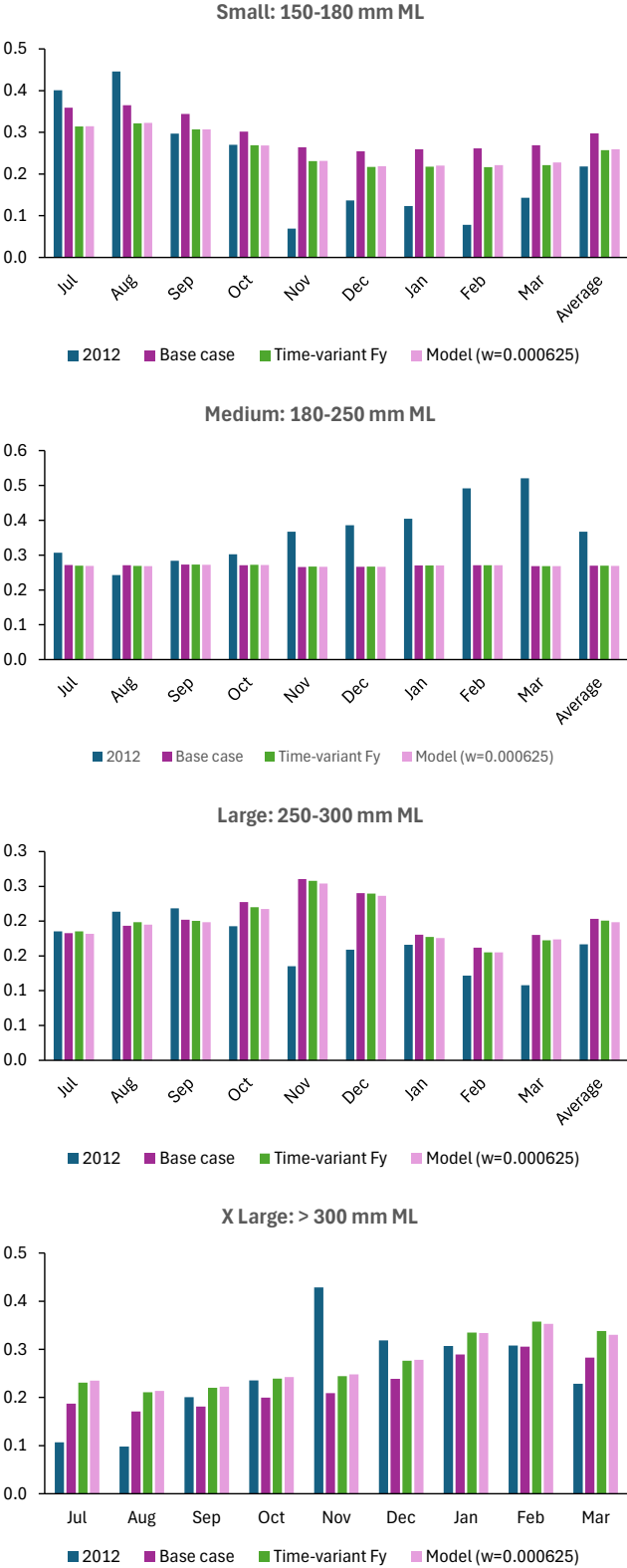


Figure 8. Comparison of the 2012 proportions by weight of each pack category in each month and the proportions generated under the Base case.

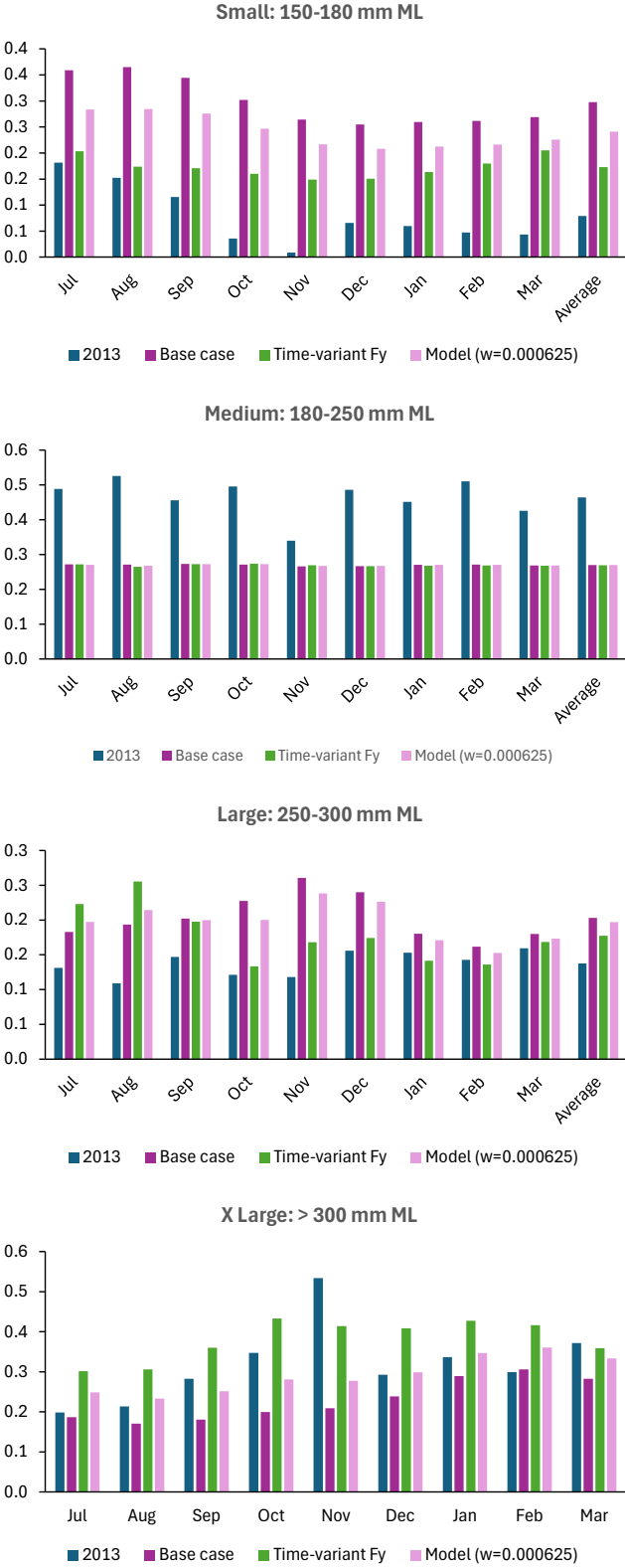


Figure 9. Comparison of the 2013 proportions by weight of each pack category in each month and the proportions generated under the Base case.

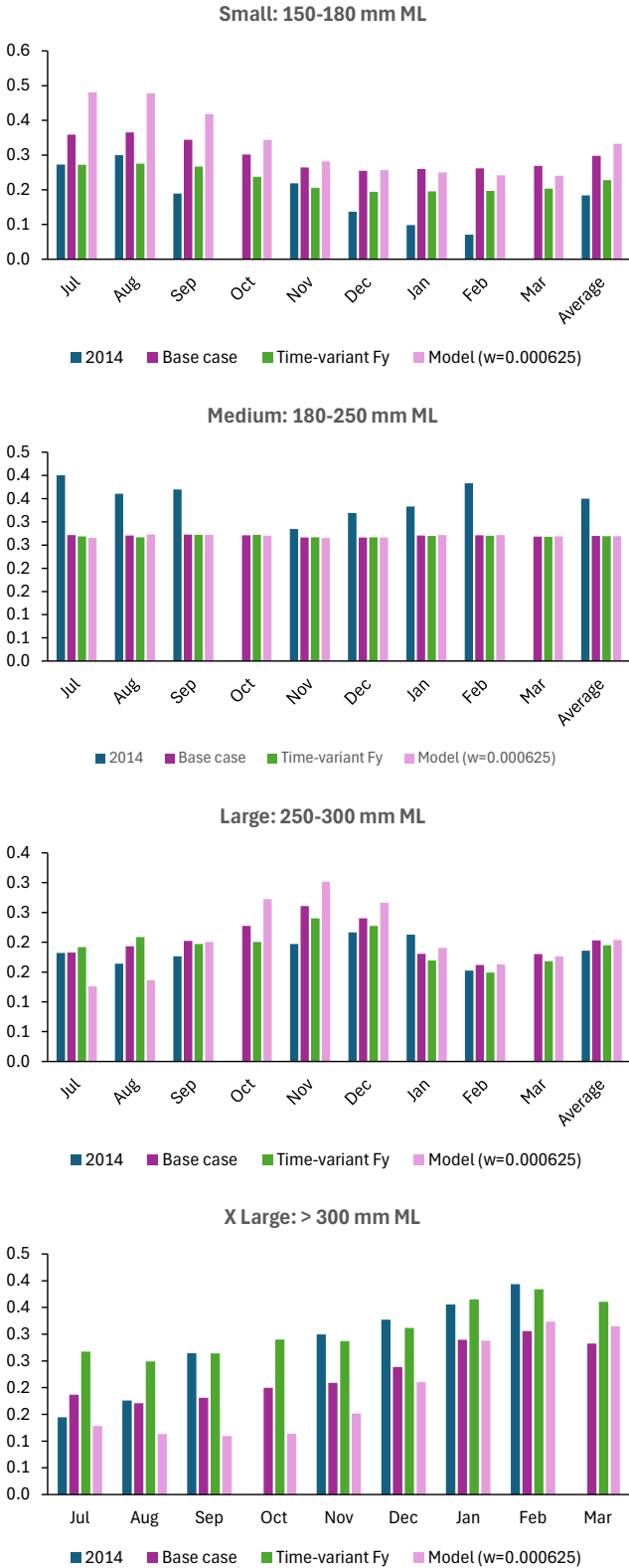


Figure 10. Comparison of the 2014 proportions by weight of each pack category in each month and the proportions generated under the Base case.

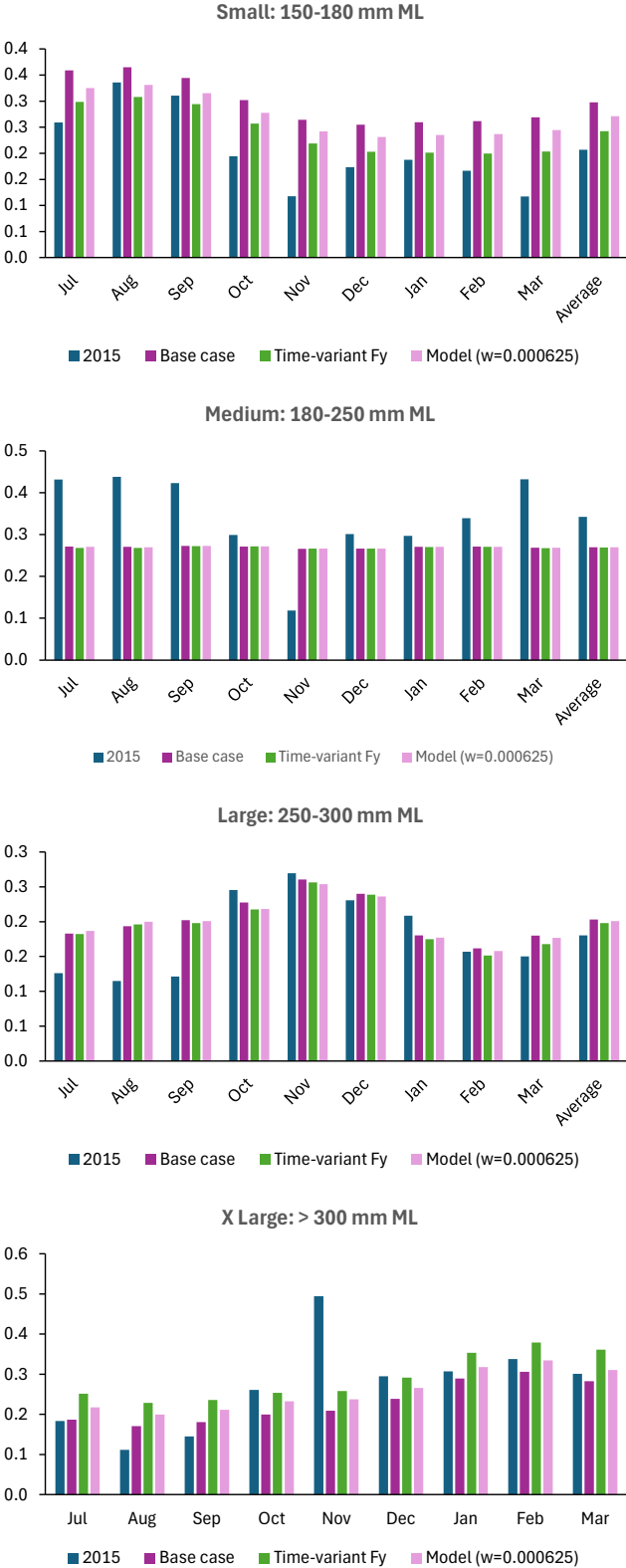


Figure 11. Comparison of the 2015 proportions by weight of each pack category in each month and the proportions generated under the Base case.

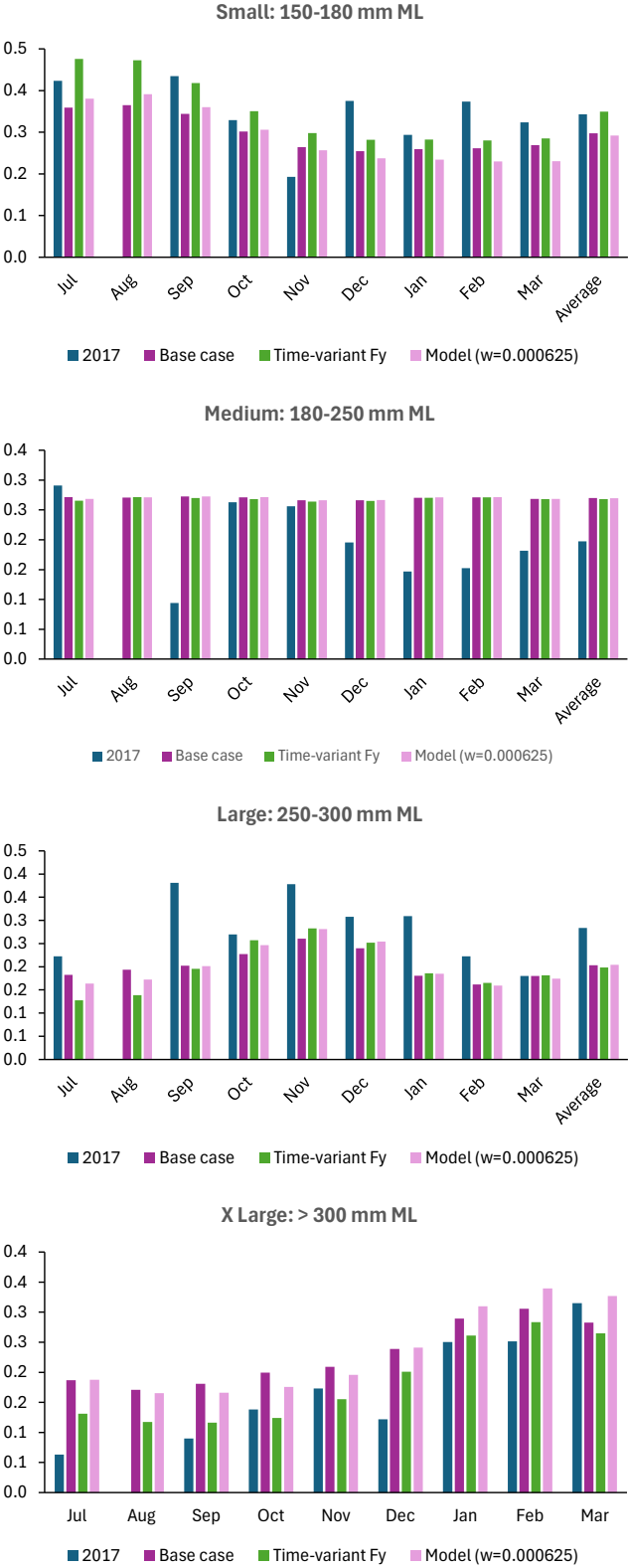


Figure 12. Comparison of the 2017 proportions by weight of each pack category in each month and the proportions generated under the Base case.

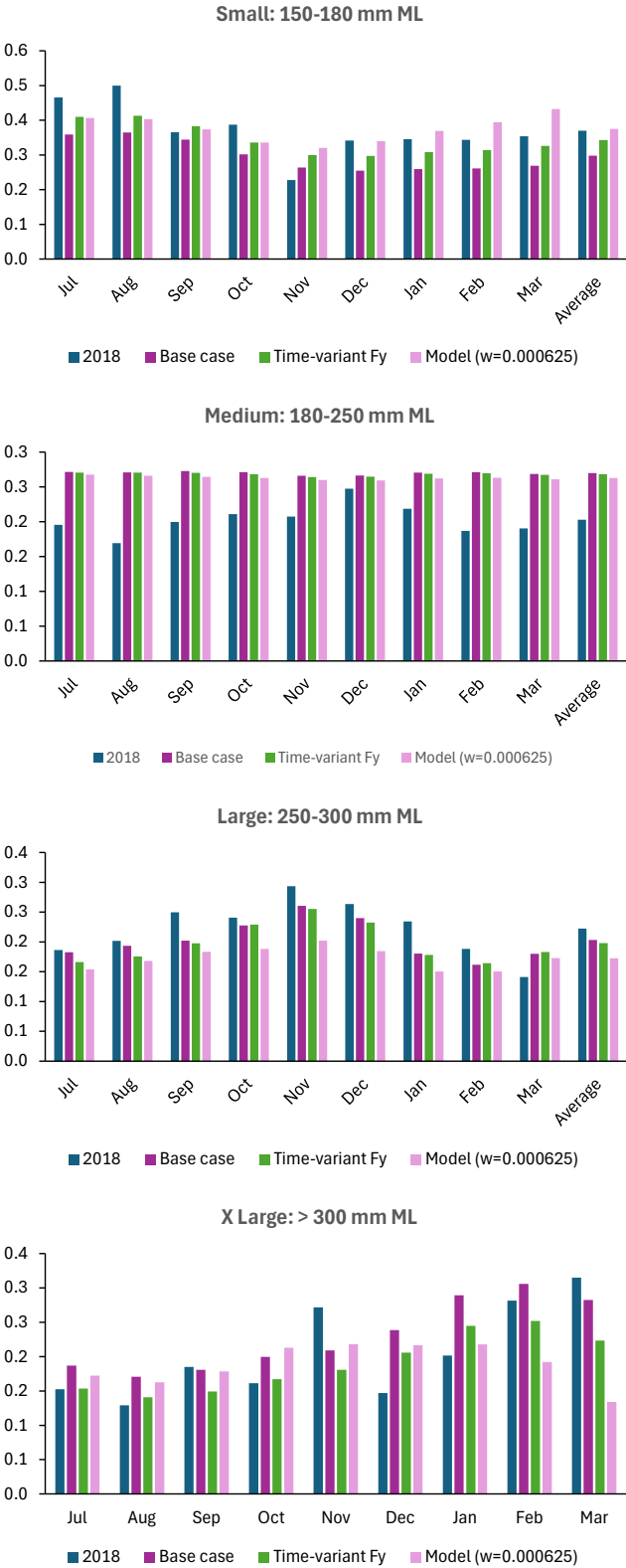


Figure 13. Comparison of the 2018 proportions by weight of each pack category in each month and the proportions generated under the Base case.

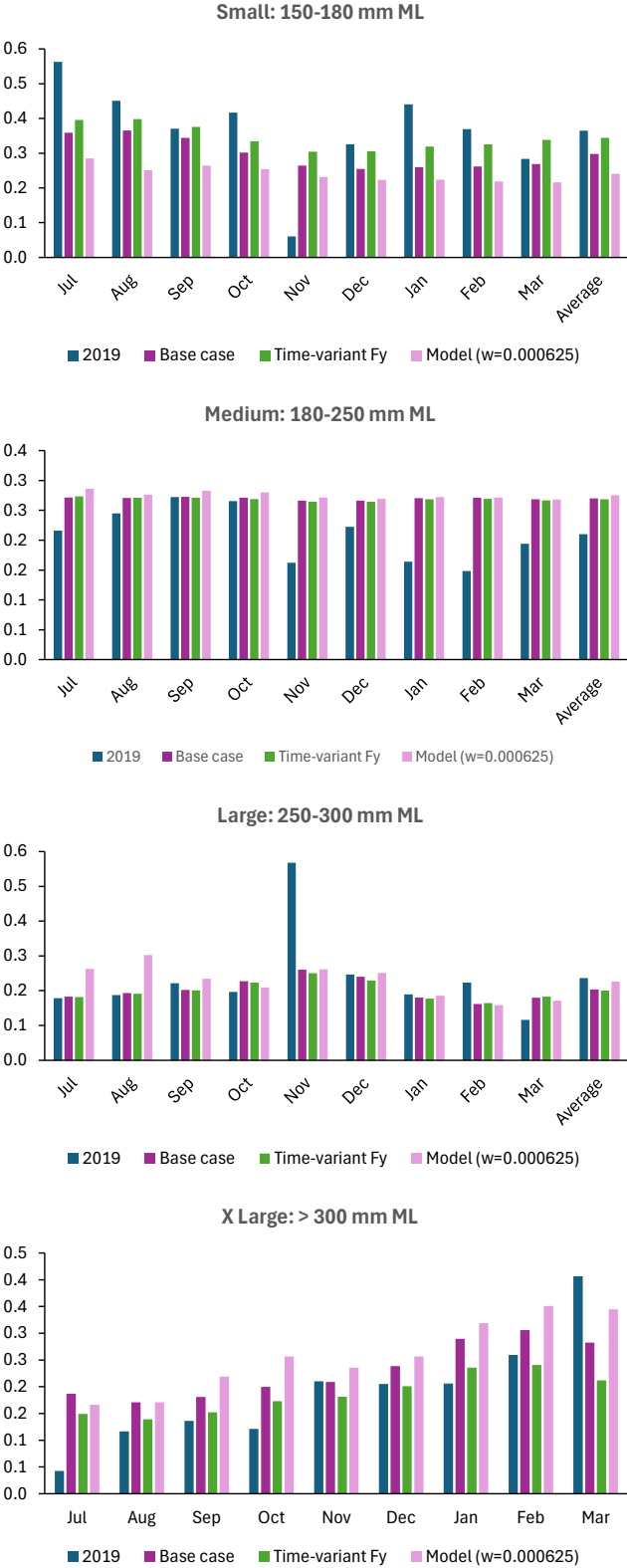


Figure 14. Comparison of the 2019 proportions by weight of each pack category in each month and the proportions generated under the Base case.

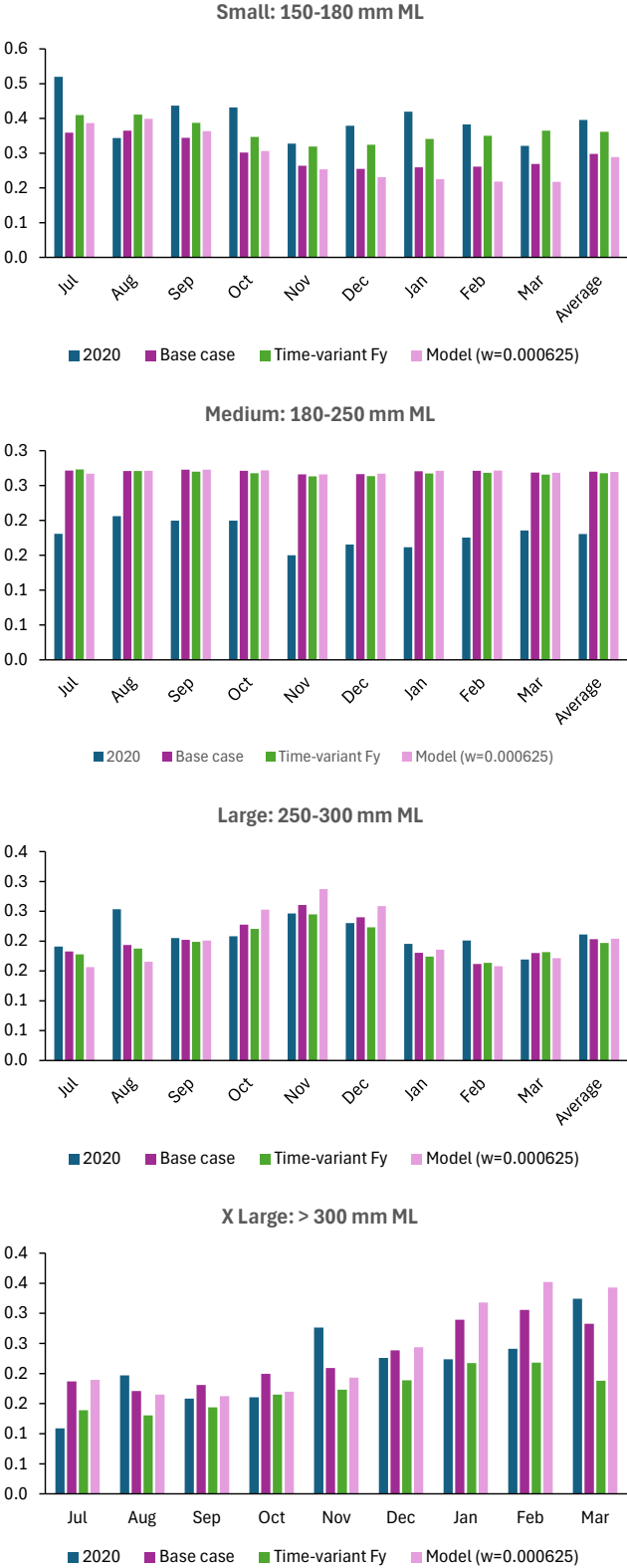


Figure 15. Comparison of the 2020 proportions by weight of each pack category in each month and the proportions generated under the Base case.

APPENDIX B**The STD file for the model run with weight = 0.000625**

index	name	value	std.dev
1	F	5.5915e-002	1.9001e-002
2	F	3.1980e-002	1.0791e-002
3	F	4.9445e-002	1.6429e-002
4	F	2.3250e-002	7.7727e-003
5	F	3.5545e-002	1.1747e-002
6	F	5.5436e-002	1.8891e-002
7	F	2.4718e-002	8.6397e-003
8	F	4.2593e-002	1.4589e-002
9	F	3.9080e-002	1.3063e-002
10	F	6.0867e-002	1.9212e-002
11	F	6.6458e-002	2.1469e-002
12	F	4.9300e-002	1.7073e-002
13	F	4.6881e-002	1.8381e-002
14	F	2.9350e-001	4.4783e-002
15	F	2.4634e-002	8.4048e-003
16	F	2.7256e-002	1.4172e-002
17	In_Tot_Recruit	1.6727e+001	2.8048e-001
18	In_Tot_Recruit	1.6872e+001	3.0324e-001
19	In_Tot_Recruit	1.7027e+001	2.8080e-001
20	In_Tot_Recruit	1.7376e+001	3.0958e-001
21	In_Tot_Recruit	1.7430e+001	2.9338e-001
22	In_Tot_Recruit	1.7079e+001	2.8179e-001
23	In_Tot_Recruit	1.7217e+001	3.2207e-001
24	In_Tot_Recruit	1.6560e+001	2.9663e-001
25	In_Tot_Recruit	1.6178e+001	2.9316e-001
26	In_Tot_Recruit	1.6892e+001	2.5586e-001
27	In_Tot_Recruit	1.6651e+001	2.5649e-001
28	In_Tot_Recruit	1.7238e+001	2.9280e-001

29 In_Tot_Recruit 1.7625e+001 3.3441e-001
30 In_Tot_Recruit 1.6337e+001 3.6651e-002
31 In_Tot_Recruit 1.7250e+001 3.1443e-001
32 In_Tot_Recruit 1.7614e+001 4.7499e-001

APPENDIX C

Fits to the survey data with 95% confidence intervals

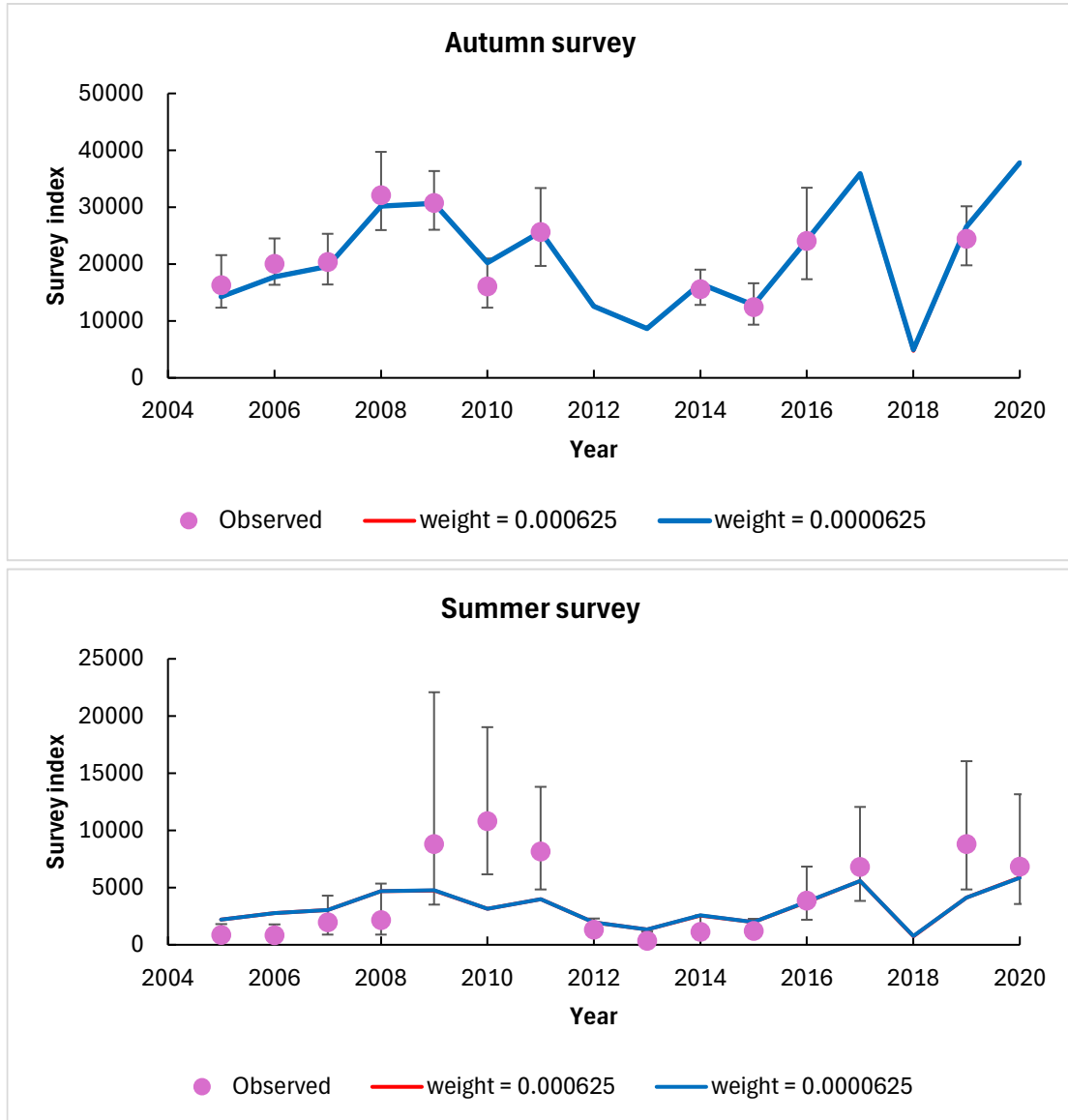


Figure 1. Observed (with 95% confidence intervals) and the model estimated trend for the survey abundance indices for the West coast and South coast of South Africa for a weight of 0.000625 applied to the penalty related to F_y .