

Plots of Desert Diamond CPUE against demersal survey and dual rights CPUE

S.J. Johnston

Abstract

This short document shows plots of the Demersal survey data against Desert Diamond CPUE and the Dual Rights CPUE against the Desert Diamond. The purpose is to ascertain whether these data sources are correlated or not.

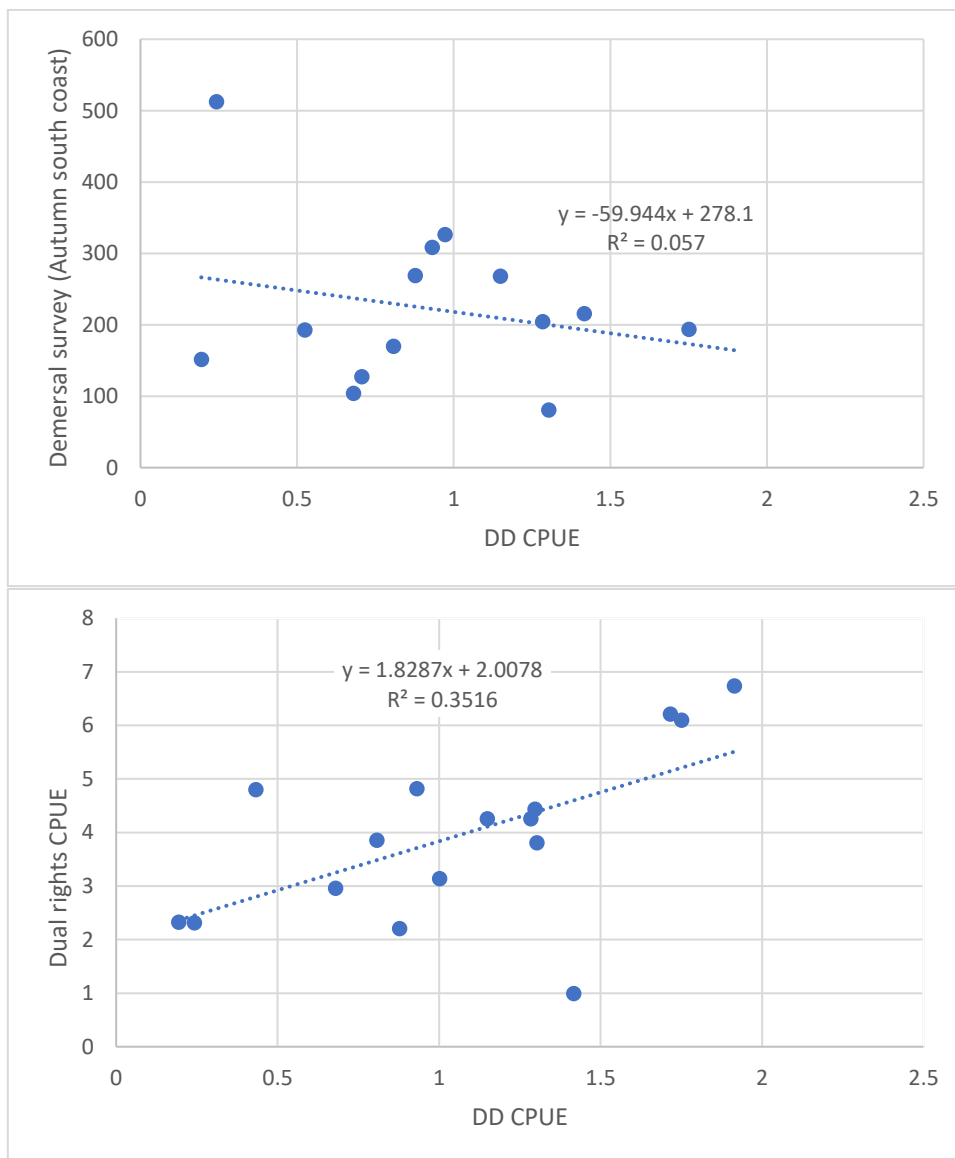


Figure 1: Plots of the Demersal survey data against Desert Diamond CPUE (top) and the Dual Rights CPUE against the Desert Diamond (bottom).