



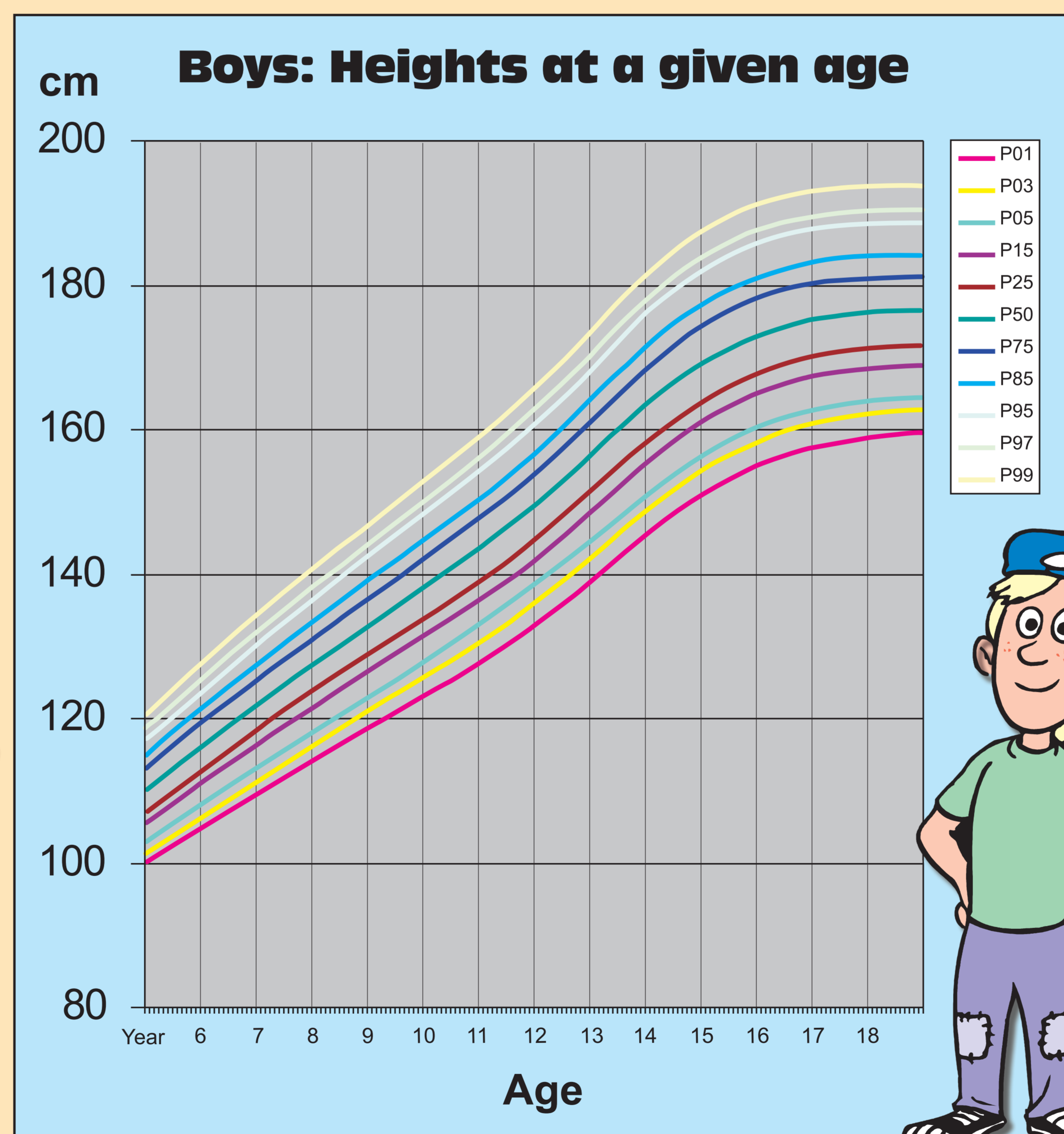
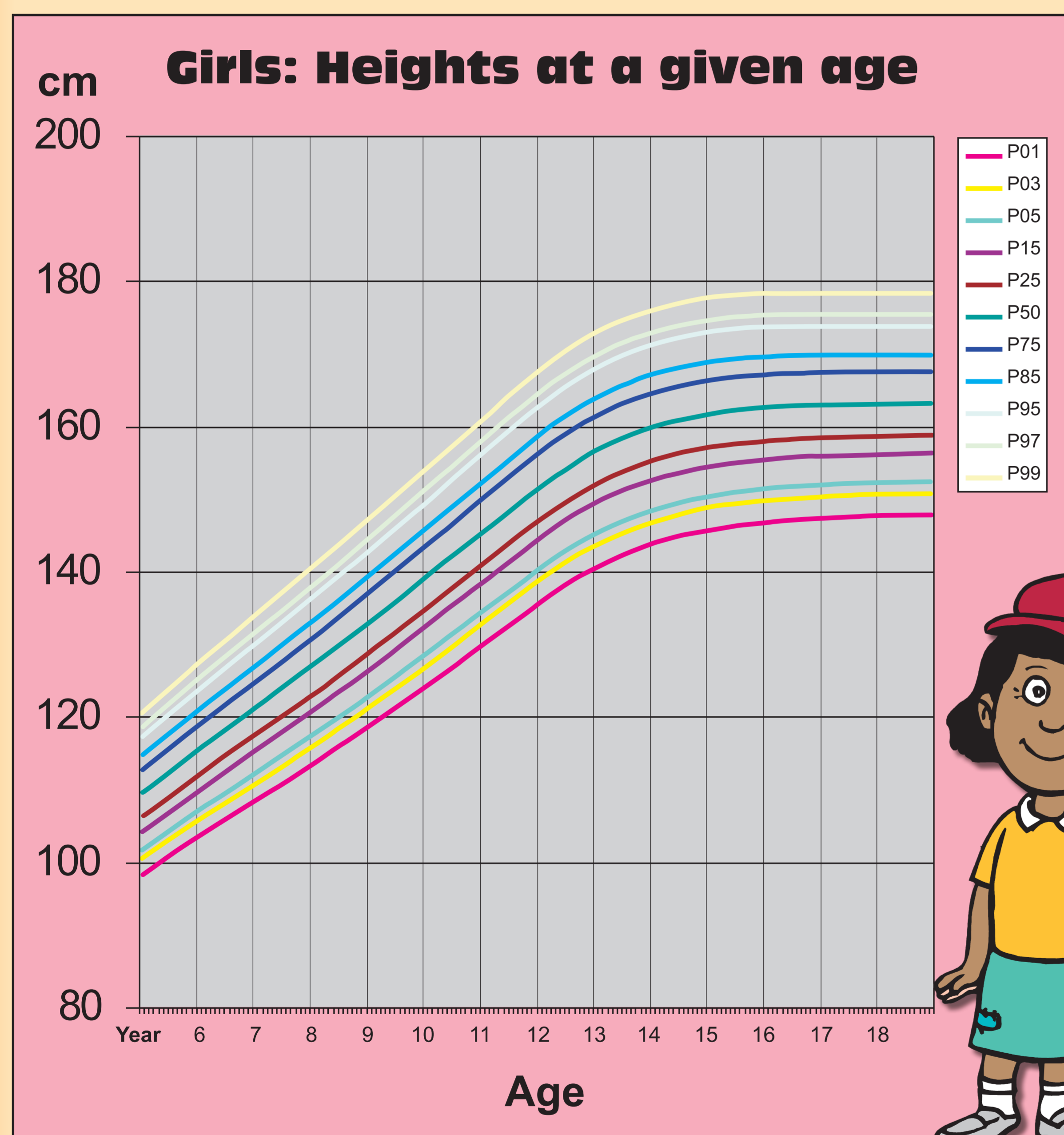
# Statistics of Growth and Life Expectancy



## People have different heights

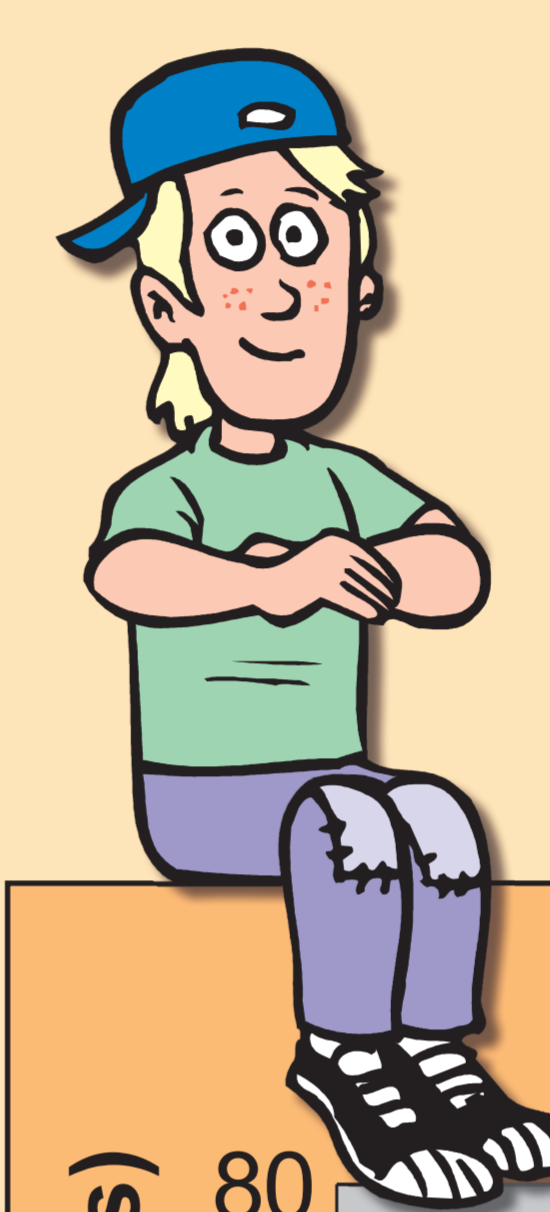
Some people are tall, some people are short. How tall will you be when you are 18? The different percentile curves are labeled 1,3,5,15, 25, 50, 75, 85, 95, 97, & 99. At each age we expect 3% of girls and boys to be below P03, and 75 % to be below P75, and so on. You can estimate your future heights by using the percentile curves below.

1. Use the side scale to measure your current height.
2. Use your age and height to find which percentile curve is closest to your data.
3. Then follow that curve to 18 and read off your estimated height.



## HIV/AIDS shortens life spans

According to the South African Life expectancy (residual expectation of life) in the absence of HIV infection, girls (red line) can expect to live longer than boys (blue line). To obtain an expected age at death, add current age to the residual expectation of life.



HIV/AIDS without antiretroviral drugs will drastically shorten lifetimes. For example, youth infected with HIV at age 11, and have no access to antiretroviral treatment, will on average live between 12 and 15 additional years as shown by the lines for upper limit (yellow) and lower (green) limit.

