

**Summary of lobster catch and effort data  
available from Gough, Inaccessible and  
Nightingale Islands: November 2007**

CHARLES EDWARDS, SUSAN JOHNSTON AND DOUG  
BUTTERWORTH

*Marine Resource Assessment and Management group,  
Department of Mathematics and Applied Mathematics,  
University of Cape Town  
November, 2007*

Here we present the available catch and effort data on lobster (*Jasus tristani*) from the islands of Gough, Inaccessible and Nightingale. Most of the data is from vessel logsheets, and is reported alongside the official catches recorded by Ovenstone fisheries and by James Glass at the Natural Resources Department (NRD) on Tristan da Cunha. Comparison reveals a number of discrepancies that this document is intended to help resolve.

Table 1: Summary of data available from **Gough** Island. All catches are recorded in kilograms and effort in the number of traps hauled.  
 LL: Longline; PB: Powerboat; M: Monster Trap; PP: Plastic Pot or Beehive Trap

Season	Retained Catch		Discards		Total		Effort			Ovenstone		NRD	
Year	Total	LL	PB		Catch	Effort	M	PP	PB	Catch		Catch	Effort
1997										86304		77300	23020
1998										87850		94652	36740
1999	24202	10098	14104	17	24219	15514	8163		7351	93359		91057	24470
2000	68571	41035	27536	5626	74197	46084	29889		16195	74941		78108	36180
2001	73546	46673	26873	8055	81601	59893	38440	140	21313	79906		87001	43500
2002	75076	51471	23605	6568	81644	54414	33603		20811	79237		76326	37540
2003	88133	57577	30556	6008	94141	68535	44110		24425	83215		84360	37740
2004	58818	46736	12082	11102	69920	39576	29050		10526	55083		56710	21800
2005	55515	39950	15565	10318	65833	24193	15063		9130	55784			

Table 2: Summary of data available from **Inaccessible** Island. Units and labels are as for Table 1

Season Year	Retained Catch		Discards	Total		Total		Effort		Ovenstone		NRD	
	Total	LL		PB	Catch	Effort	M	PP	PB	Catch	Catch	Effort	
1997	175932	157942	17990	4815.95	180747.95	47832	4712	35019	8101	61108	61110	18520	
1998	49493	38205	11288	34127	83620	21421	13233	3600	4588	60102	59640	16990	
1999	40823	27768	13055	26261	67084	11605	7390		4215	62725	62590	15010	
2000	59718	45910	13808	36002	95720	17708	13734		3974	65131	72900	13670	
2001	70315	50999	19316	42143	112458	24934	14945	107	9882	69134	72610	15360	
2002	73159	53278	19881	36599	109758	18933	12079		6854	69062	66600	11100	
2003	78493	43909	34584	8072	86565	16118	6687		9431	75281	76200	6700	
2004	93189	87815	5374	26591	119780	13874	11839		2035	85829	82570	11480	
2005	87655	87655		35331	122986	12672	12672			90876			

Table 3: Summary of data available from **Nightingale** Island. Units and labels are as for Table 1

Season	Retained Catch	Discards	Total Catch	Total Effort	M	Effort	PB	Ovenstone Catch	NRD Catch	NRD Effort
Year	Total LL	PB	Catch	Effort		PP				
1997								51288	51290	17570
1998								50641	50640	13460
1999								51433	49990	12690
2000	22440	17955	4485	5670	28110	4544	4000	51348	51460	7514
2001	58036	41409	16627	17821	75857	20997.5	12830.5	55927	58350	12900
2002	57715	35876	21839	15480	73195	20969	10750	55340	57290	10770
2003	40933	28207	12726	6251	47184	9689	5049	56250	56040	5525
2004	32025	32025		8178	40203	5433	5433	60515	59980	10640
2005	62130	59660	2470	7200	69330	8504	8264	60871		

Table 4: Nominal CPUE series from **Gough** Island.

Season Year	Monster	Plastic Pots	Powerboat	NRD
1997				0.34
1998				0.26
1999	1.32		1.94	0.37
2000	1.32		1.57	0.22
2001	1.19		1.1	0.2
2002	1.44		1.06	0.2
2003	1.26		1.19	0.22
2004	1.53		1.07	0.26
2005	2.56		1.7	

Table 5: Nominal CPUE series from **Inaccessible** Island.

Season Year	Monster	Plastic Pots	Powerboat	NRD
1997	4.72	3.69	2.47	0.33
1998	2.31	1.14	2.37	0.35
1999	3.5		3.15	0.42
2000	2.93		3.36	0.53
2001	3.1	0.49	1.87	0.47
2002	4.1		2.78	0.6
2003	6.21		3.68	1.14
2004	7.17		2.59	0.72
2005	6.73			

Table 6: Nominal CPUE series from **Nightingale** Island.

Season Year	Monster	Plastic Pots	Powerboat	NRD
1997				0.29
1998				0.38
1999				0.39
2000	4.32		7.12	0.69
2001	3.01		1.83	0.45
2002	3.21		2.05	0.53
2003	5.54		2.67	1.01
2004	5.77			0.56
2005	7.12		10.29	

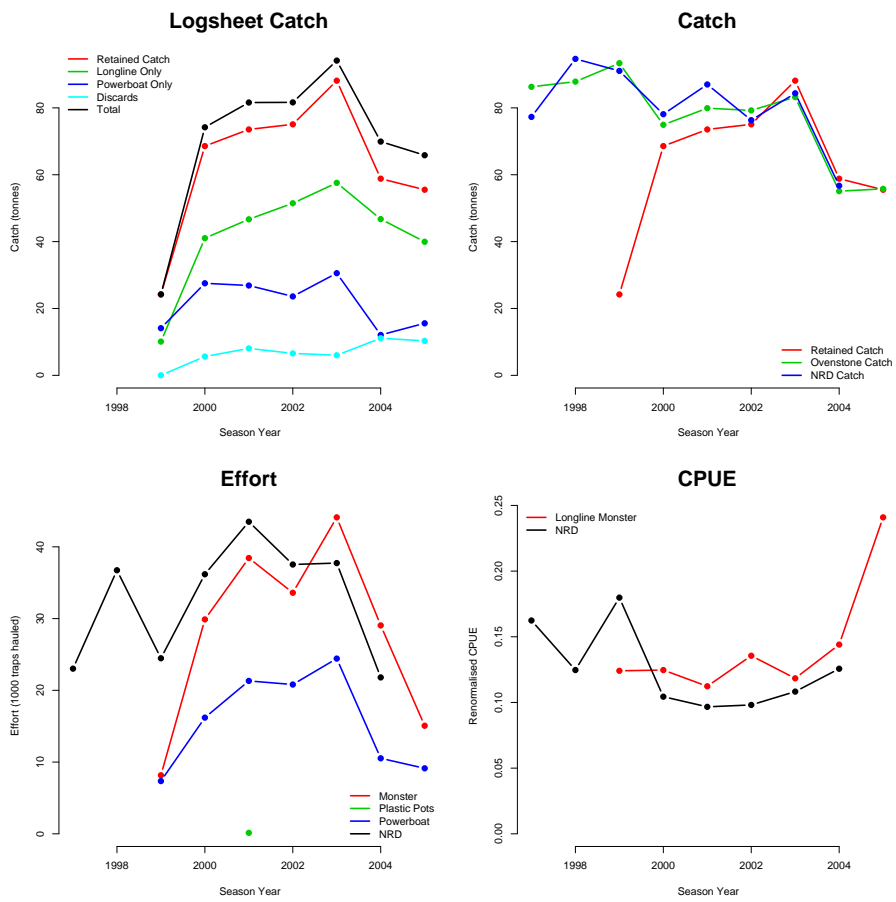


Figure 1: Summary of data available from **Gough** Island.

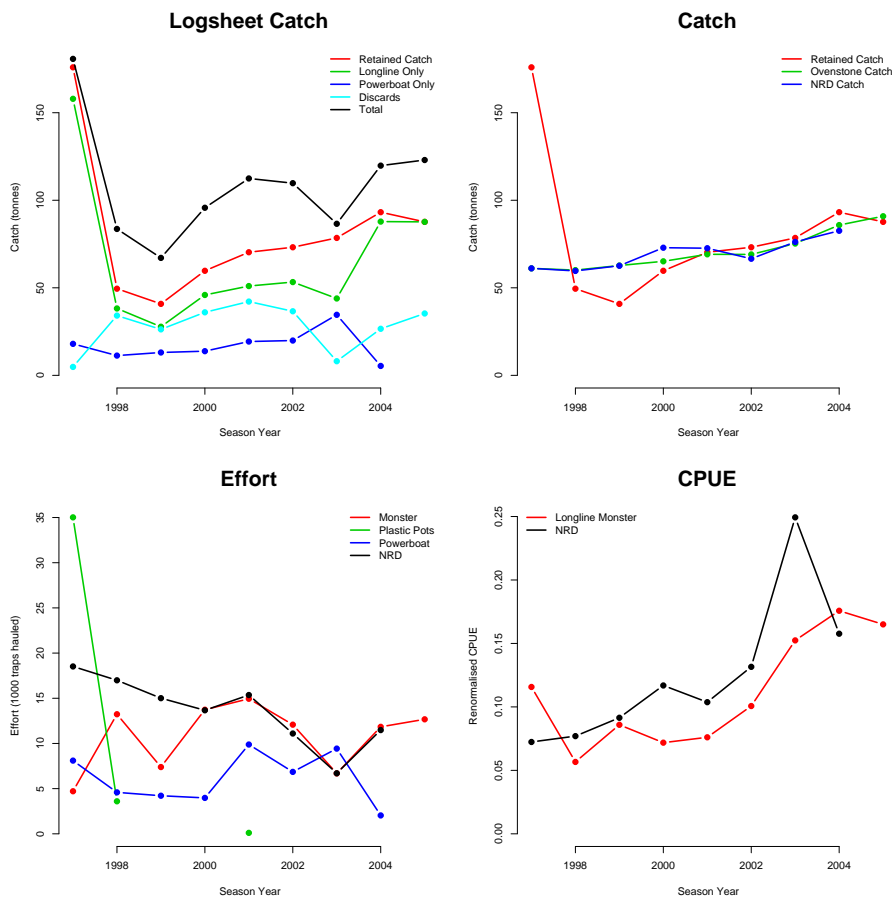


Figure 2: Summary of data available from **Inaccessible** Island.



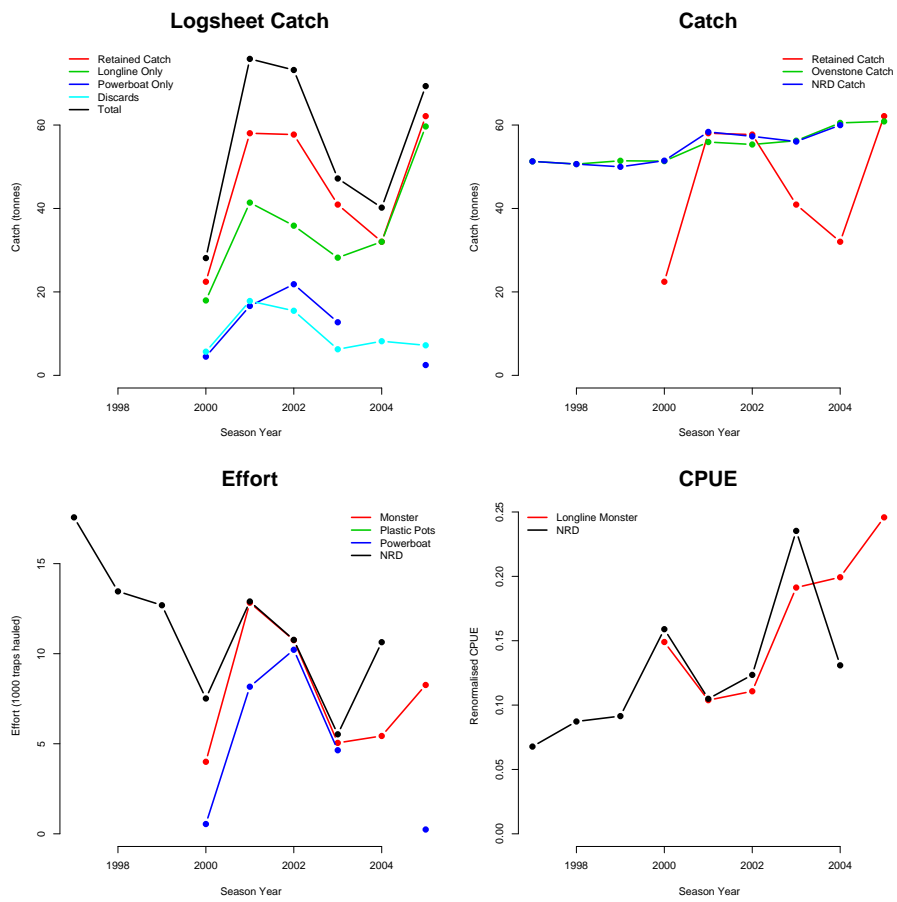


Figure 3: Summary of data available from **Nightingale Island**.