

November survey length frequency data

C.L. de Moor*

Correspondence email: carryn.demoor@uct.ac.za

Figure 1 shows the annual proportions-at-length sampled from the November survey west of Cape Agulhas while Figure 2 shows the annual proportions-at-length sampled from the November survey east of Cape Agulhas.

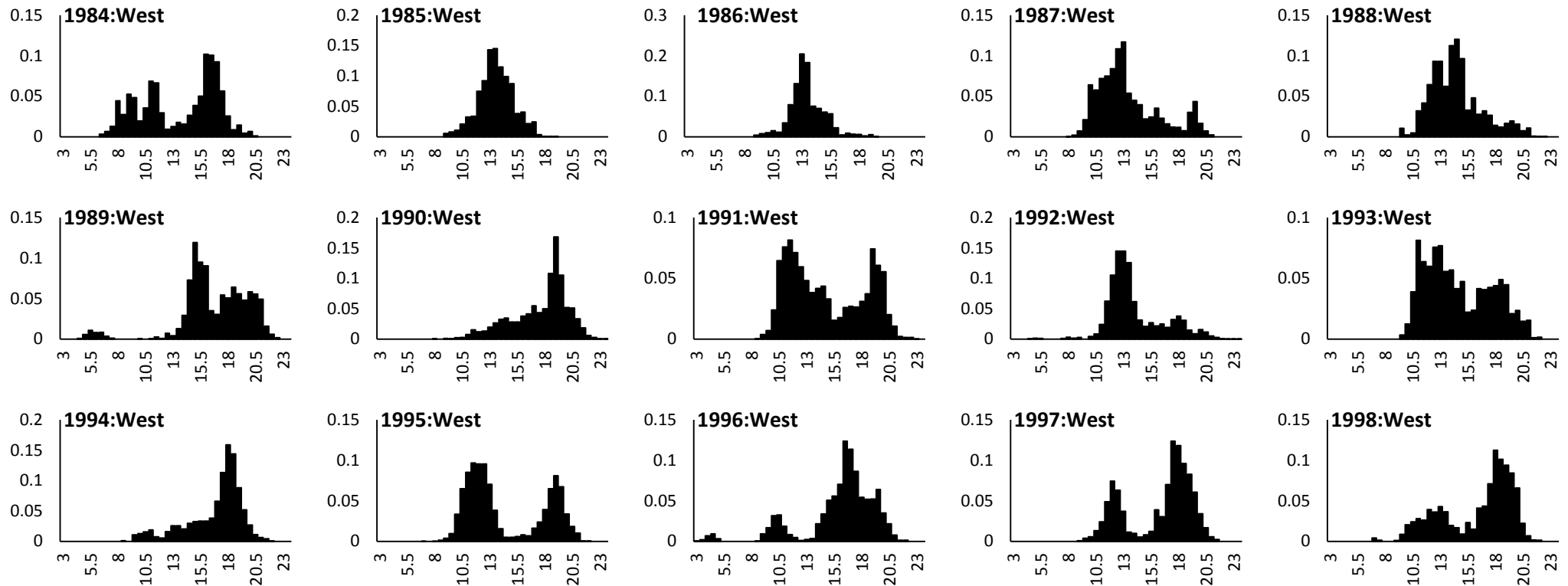


Figure 1. November survey sampled proportions-at-length west of Cape Agulhas.

* MARAM (Marine Resource Assessment and Management Group), Department of Mathematics and Applied Mathematics, University of Cape Town, Rondebosch, 7701, South Africa.

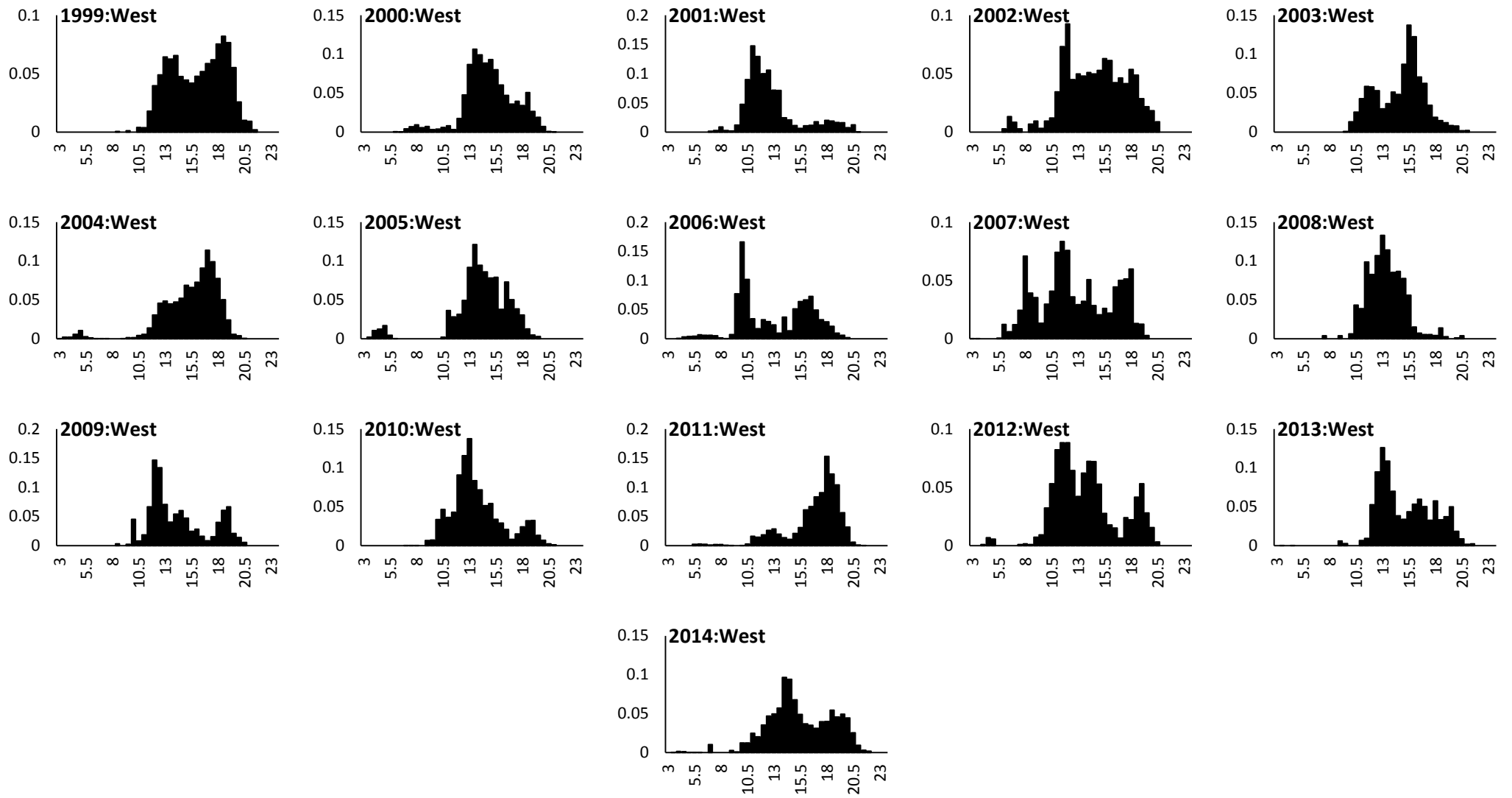


Figure 1 (continued).

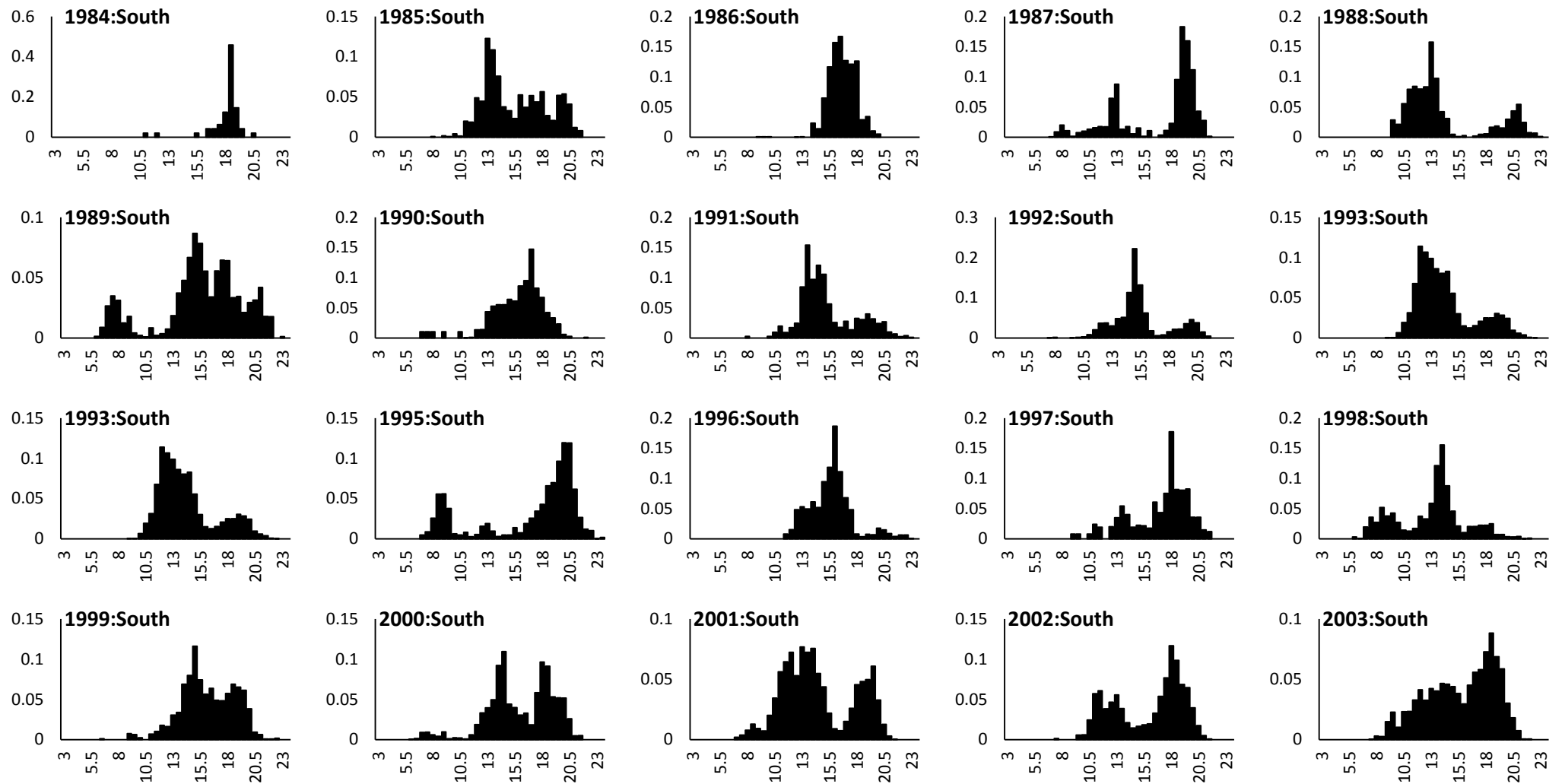


Figure 2. November survey sampled proportions-at-length south-east of Cape Agulhas.

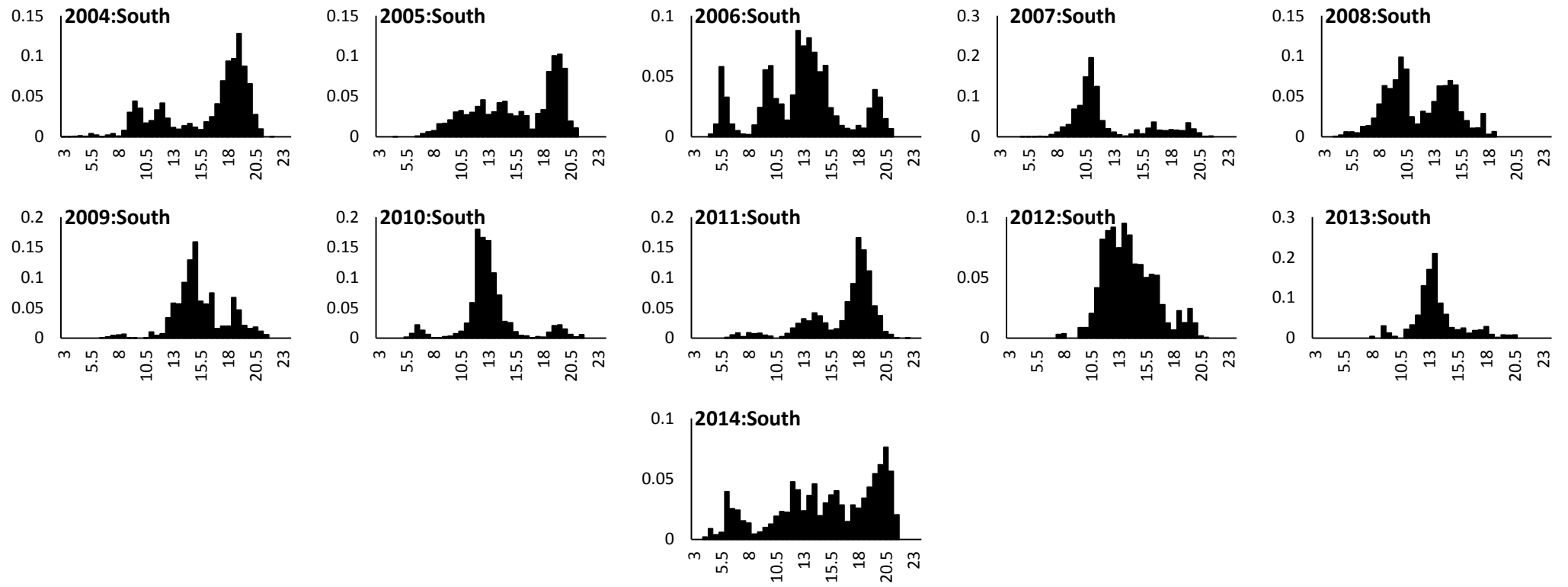


Figure 2 (continued).