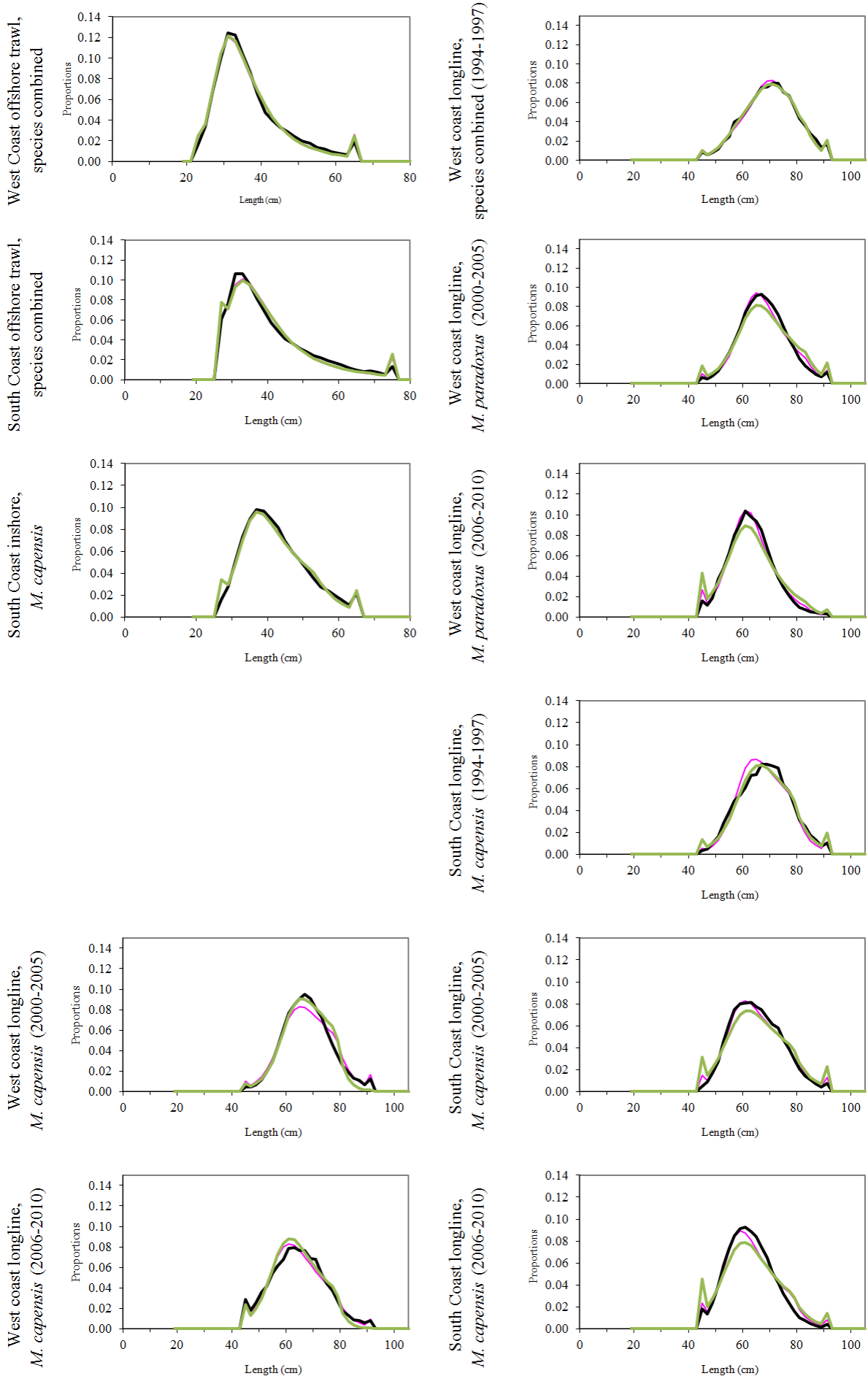


	RC	Downweighting	RC with Downweighting selectivity	Downweighting with RC selectivity	
-lnL total	-172.3	-125.3	-152.6	-116.3	
CPUE historic	-39.9	-40.2	-40.2	-40.0	
CPUE GLM	-168.6	-170.3	-170.0	-163.3	
Survey	-32.1	-33.4	-32.8	-33.1	
Commercial CAL - trawl	-45.1	-44.8	-44.7	-47.2	
Commercial CAL - longline	-68.9	-17.2	-45.8	-16.3	
Survey CAL (sex-aggr.)	-3.0	-5.4	-4.9	-3.7	
Survey CAL (sex-disaggr.)	42.9	43.1	43.1	43.7	
ALK	117.4	118.4	118.2	118.4	
Recruitment penalty	8.6	8.4	8.4	9.1	
Selectivity smoothing penalty	15.5	15.9	15.9	15.5	
<hr/>					
<i>M. paradoxus</i>	K^{sp}	754	855	853	791
	h	0.96	0.93	0.93	0.93
	B^{sp}_{2012}	114	163	159	126
	B^{sp}_{2012}/K^{sp}	0.15	0.19	0.19	0.16
	B^{sp}_{2013}	108	160	156	119
	B^{sp}_{2013}/K^{sp}	0.14	0.19	0.18	0.15
	B^{sp}_{MSY}	158	173	170	167
	B^{sp}_{MSY}/K^{sp}	0.21	0.20	0.20	0.21
	$B^{sp}_{2012}/B^{sp}_{MSY}$	0.72	0.94	0.94	0.76
	$B^{sp}_{2013}/B^{sp}_{MSY}$	0.68	0.92	0.92	0.71
	MSY	113	116	116	109
<hr/>					
<i>M. capensis</i>	K^{sp}	239	242	242	274
	h	1.03	0.99	0.99	0.99
	B^{sp}_{2012}	152	153	154	180
	B^{sp}_{2012}/K^{sp}	0.64	0.63	0.64	0.66
	B^{sp}_{2013}	170	172	172	200
	B^{sp}_{2013}/K^{sp}	0.71	0.71	0.71	0.73
	B^{sp}_{MSY}	96	100	100	112
	B^{sp}_{MSY}/K^{sp}	0.40	0.41	0.41	0.41
	$B^{sp}_{2012}/B^{sp}_{MSY}$	1.58	1.53	1.55	1.60
	$B^{sp}_{2013}/B^{sp}_{MSY}$	1.76	1.72	1.73	1.78
	MSY	63	63	63	71

RC (pink line) vs RC with Downweighting Selectivity



Selectivities for RC and Downweighting

