

# Presentation of the Panel Report

International Fisheries Stock  
Assessment Review Workshop

2-6 Dec 2013

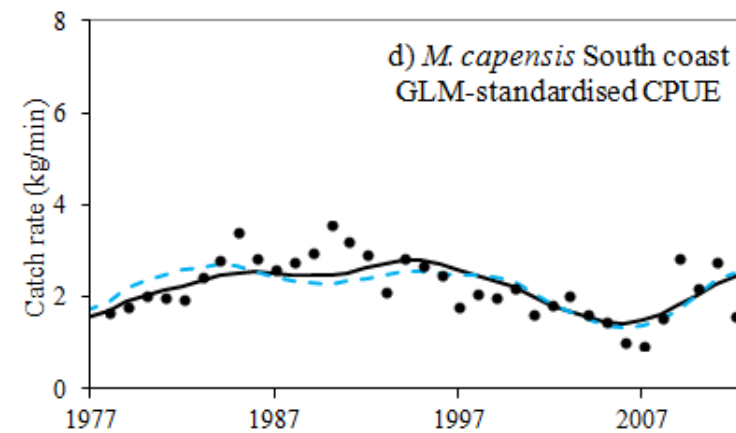
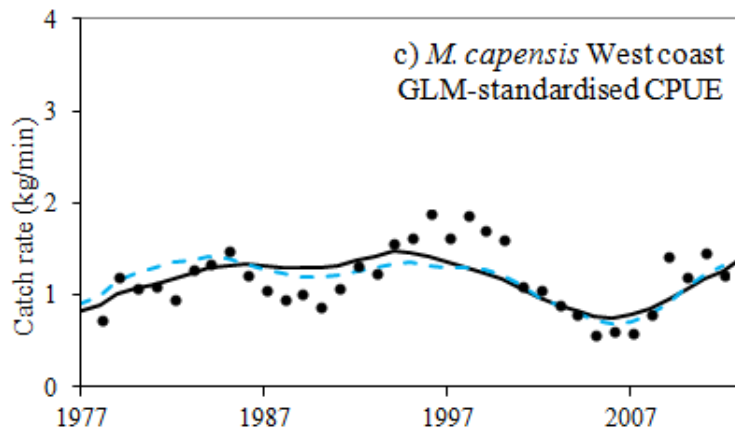
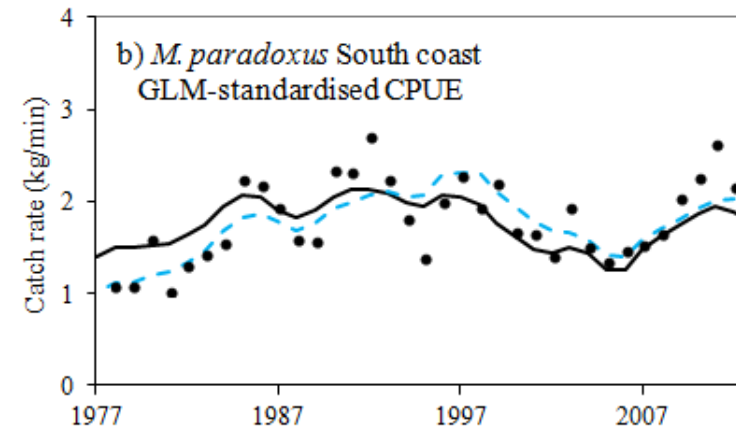
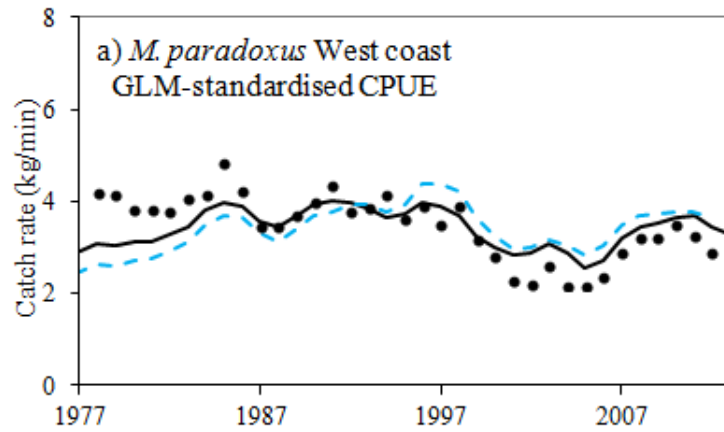
# Focus of the review

- SA hake assessments and OMP
- Hake surveys
- Sardine two stock model
- Linefish CPUE
- ECOFISH project

# Approach for the review

- Presentation of scientific papers related to each topic
- Technical comments on models, data analysis methods, data, OMP specifications etc
- This presentation focuses on highlights and key outcomes rather than the technical detail

# SA hake



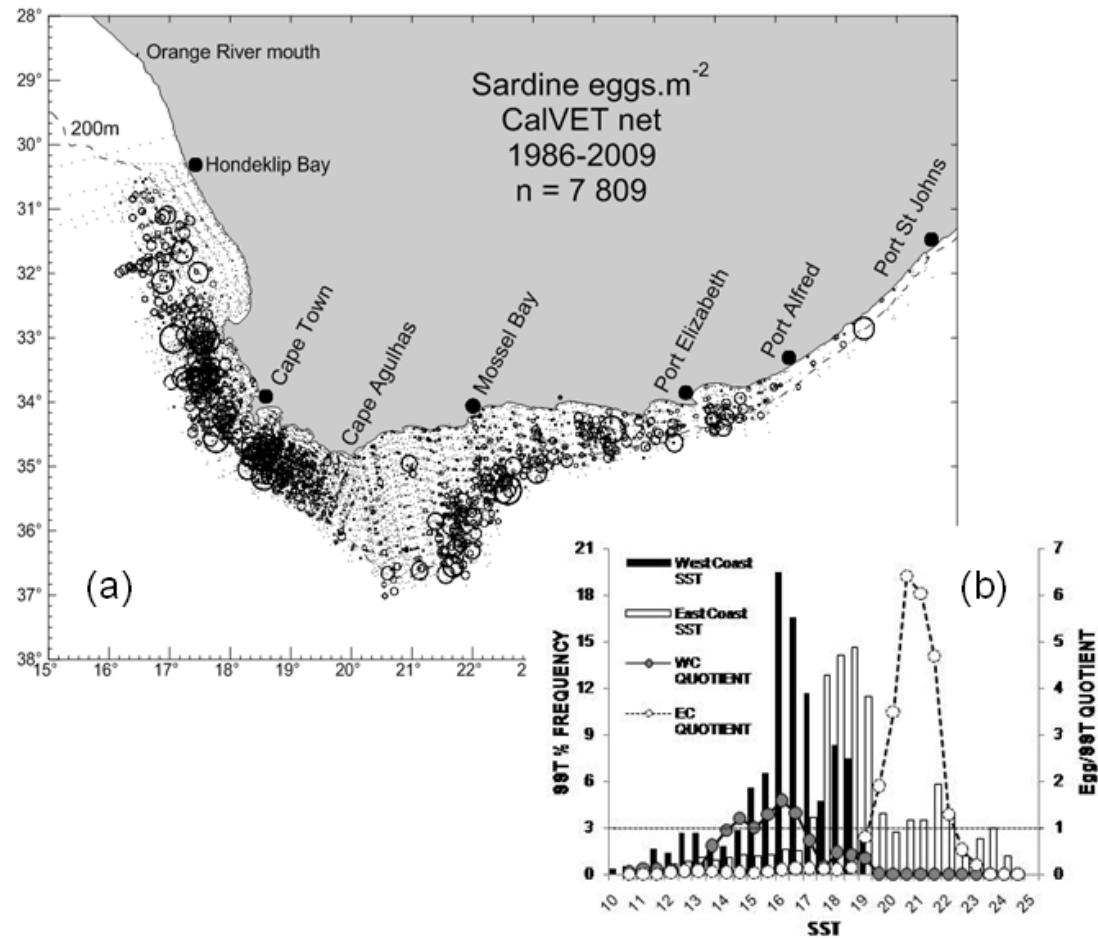
# SA hake

- New data in the assessment have revised somewhat the view of stock level for deepwater hake
- Other models examined
  - Spatial movement
  - Predation and cannibalism
- Over the longer term, the OMP approach is working well for hake

# Hake surveys

- Fishery surveys are important both to assess stock status and in the OMP
- Ongoing unavailability of *Africana*
- The management process has adapted to the situation but needs to re-establish long term consistent surveys as soon as possible

# Sardines – two stocks + movement



# Sardines

- Lots of evidence to support that movement occurs, the question is how much
  - If too much, then western stock collapses
  - Various assumptions discussed and tested
  - New data identified that might be informative
    - Parasites as biological tags
- Management decisions have implications for stock levels, ecosystem impacts, economic and social impacts – need to consider all these trade-offs



# Linefish CPUE

- Why we need to “standardize”
- A new method developed for linefish
- Good progress on the method since the review in 2012
- The method shows promise for application to many other fisheries
- The results for linefish can now be used to assess stock status for a number of species

# ECOFISH

- The Panel reviewed several aspects of the work under this program
- Some interesting results presented on the spatial structure of hake stocks off Namibia and South Africa
- New results on ageing of the inshore species of hake off Namibia

# Summary

- SA hake – “business as usual”
- Surveys – “be consistent”
- Sardines – “how much do they move?”
- Linefish – “move on to assessments”
- ECOFISH – “hypotheses for spatial structure of hake”

# Concluding remarks

- As in previous reviews, the Panel was highly impressed with the quality of information presented
- The amount of information and the number of issues covered did not always allow for comprehensive technical review on all issues
- Maintaining data quality is vital for the future