

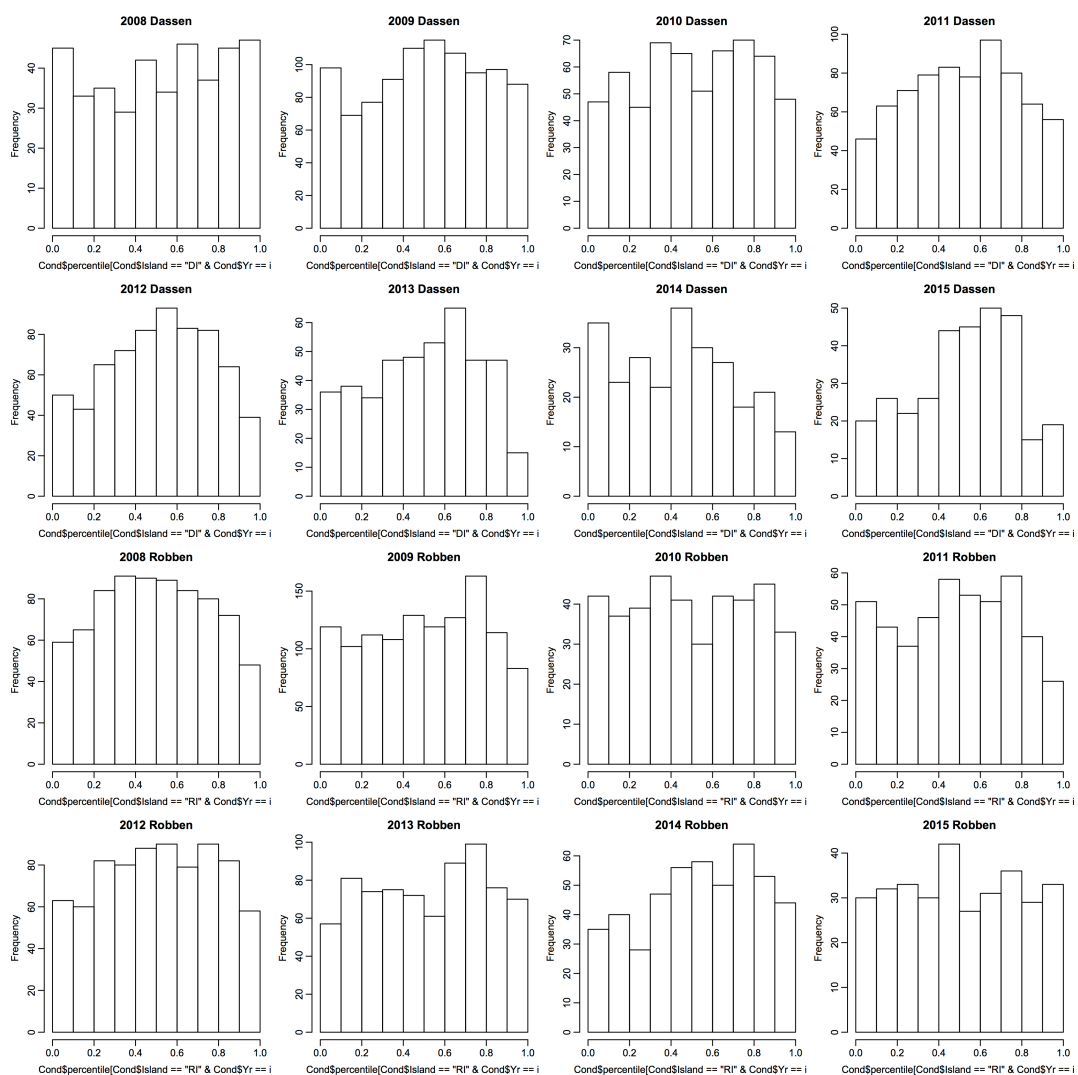
# Updated diagnostics plots for JAGS models on chick condition

Richard B. Sherley

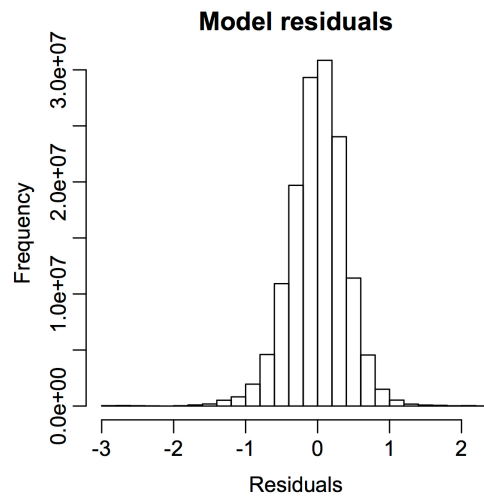
Environment and Sustainability Institute, University of Exeter, Penryn Campus, Cornwall, TR10 9FE, United Kingdom; Department of Biological Sciences, University of Cape Town, Private Bag X3, Rondebosch 7701, South Africa. E-mail: [r.sherley@exeter.ac.uk](mailto:r.sherley@exeter.ac.uk)

Below are updated plots for the chick condition model in MARAM/IWS/DEC16/Peng\_Clos/P2 after an error was found and plots requested for the aggregated data model in the bottom row of the table in MARAM/IWS/DEC16/Peng Clos/WP3.

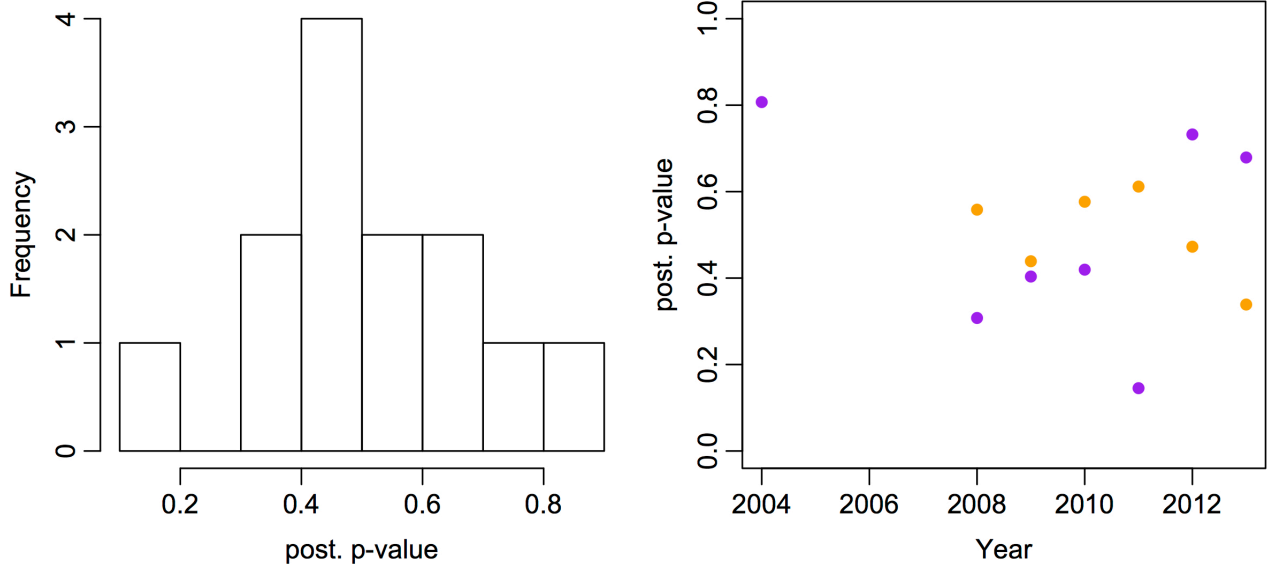
Condition model on disaggregated data (2008-2015): posterior predictive p-values by island year.



Condition model on disaggregated data (2008-2015): Distribution of model residuals



Condition model on aggregated data (2004, 2008-2015): posterior predictive p-values overall (left) and by island year (right). Purple = Robben, Orange = Dassen



Condition model on aggregated data (2004, 2008-2015): Histogram of model residuals

