

Hake – Working Paper 3

This is an update on Figure 1 of WP2 that now includes results for two further assessments:

- “RC2016”: The 2016 RC (RS1 of MARAM/IWS/DEC16/Hake Asses/P1);
- “RC2014”: The RC at the time OMP2014 was adopted;
- “RC2016 with 2014 data”: as a) above but with data as in b), except for the catches;
- “RC2010”: The RC at the time OMP2010 was adopted;
- “RC2012”: An update of d) above that includes further data.

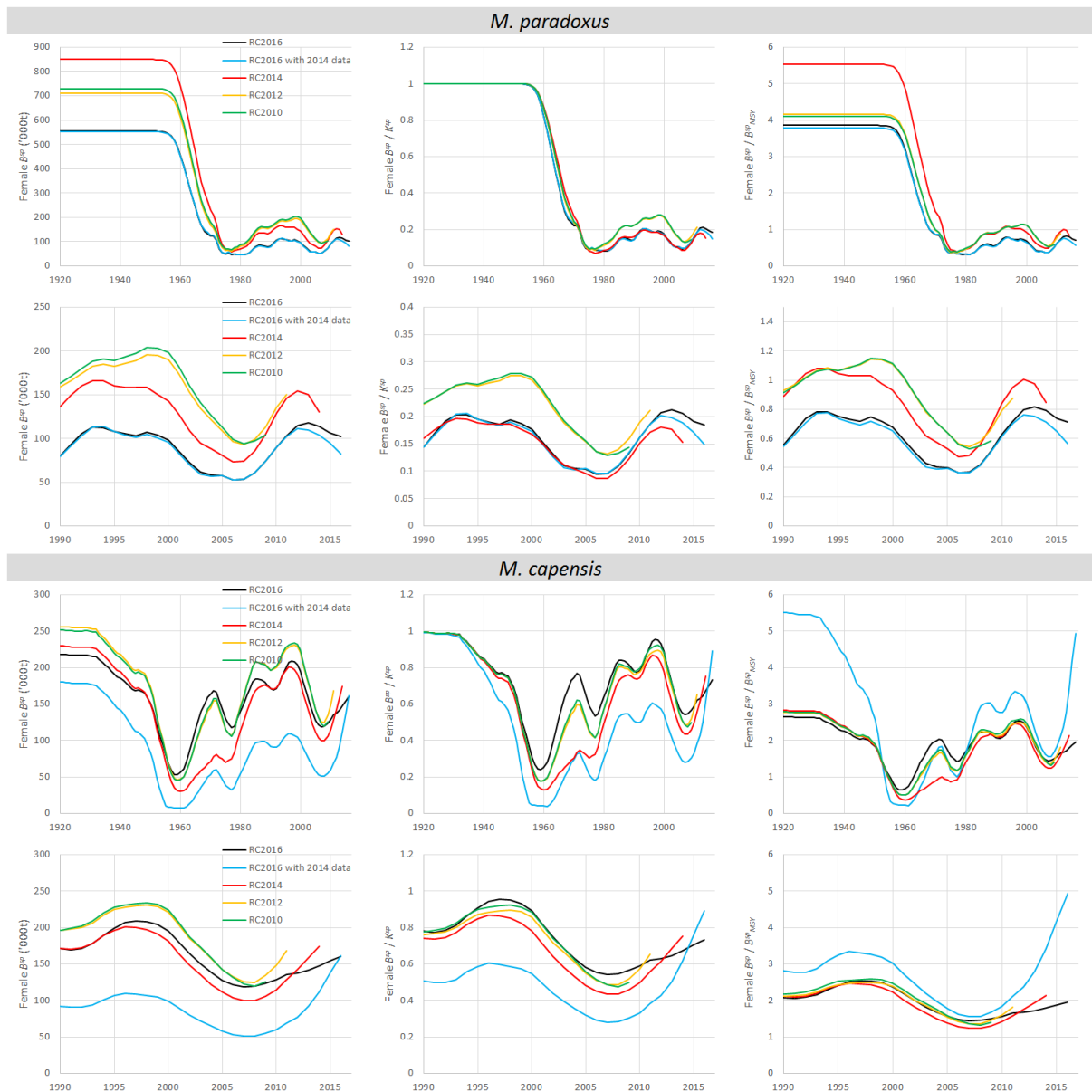


Figure 1: Spawning biomass trajectories (in absolute terms, and relative to pre-exploitation level and to B_{MSY}) for *M. paradoxus* and *M. capensis*, for the five runs. For each species, the second row repeats the first row but with a different range of years.