
CLASSIFICATION

The work consists in classifying a sample of 20 galaxies from Spitzer 3.6 μ m images, which show the old disk population. You must give:

the morphological type following the complete de Vaucouleurs (RC3) classification.

-
- For an elliptical, E_n (e.g.: E0):
 - n = 0 à 7
 - For a Spiral, S (e.g.: SAB(rs)cd):
 - A, B or AB (normal, barred or intermediate)
 - r, s or rs (*ringed*, *spindle* or intermediate)
 - 0, 0a, a, ab, b, bc, c, cd, d, dm, m
 - For the I (e.g.: Im):
 - 0 or m
 - Give a few lines of justification
-

GALAXY #1



GALAXY #2



GALAXY #3



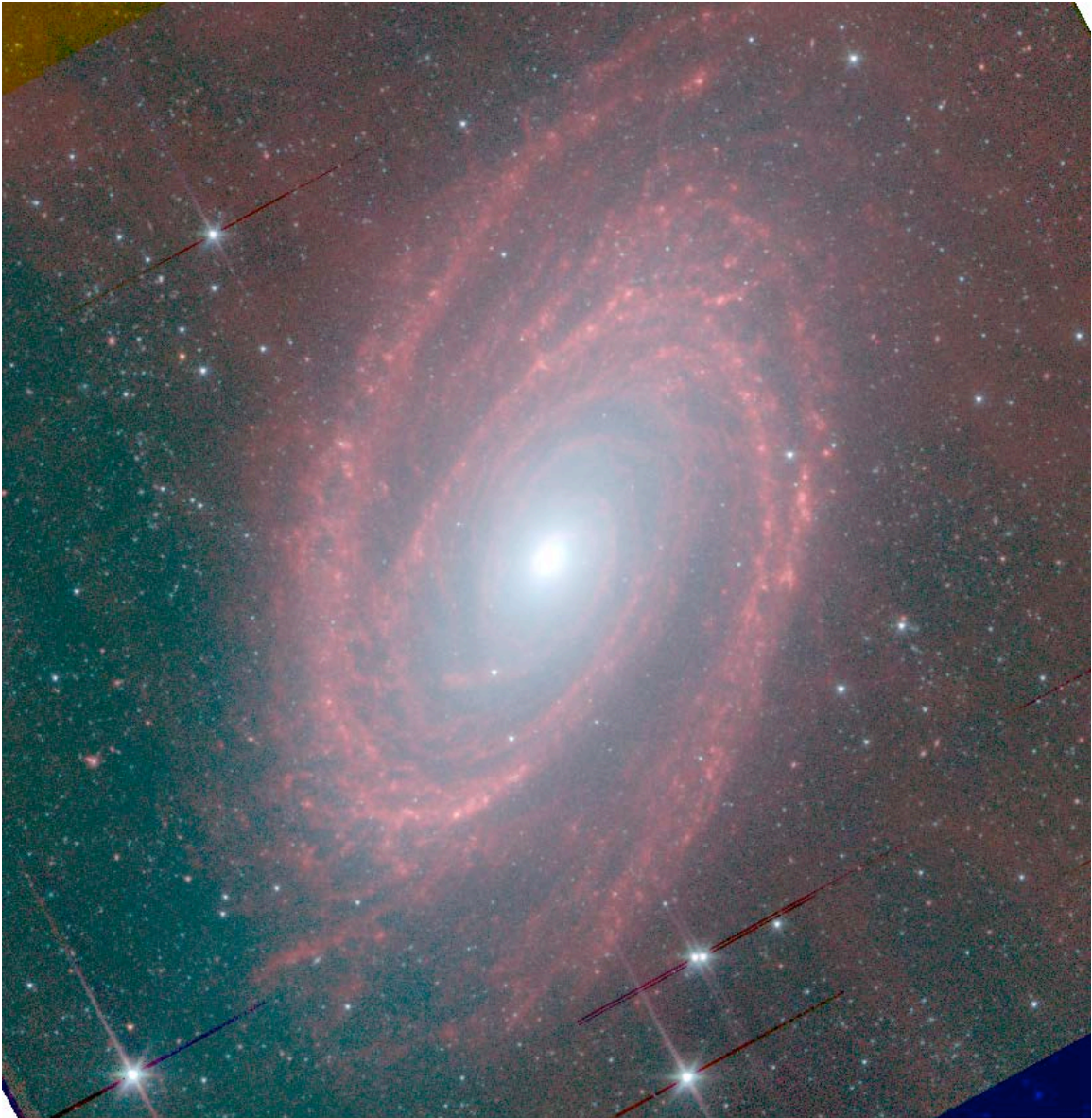
GALAXY #4



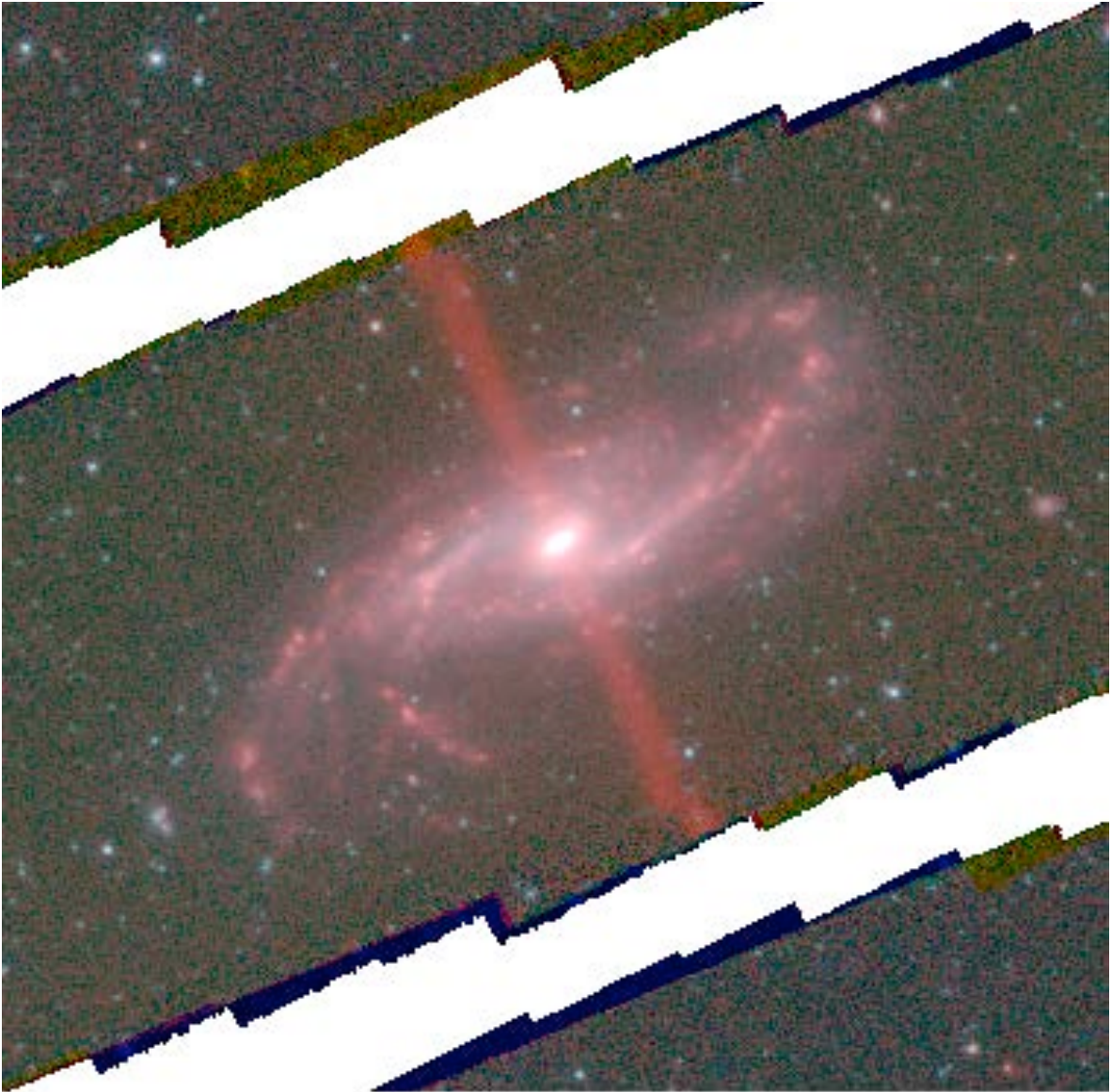
GALAXY #5



GALAXY #6



GALAXY #7



GALAXY #8



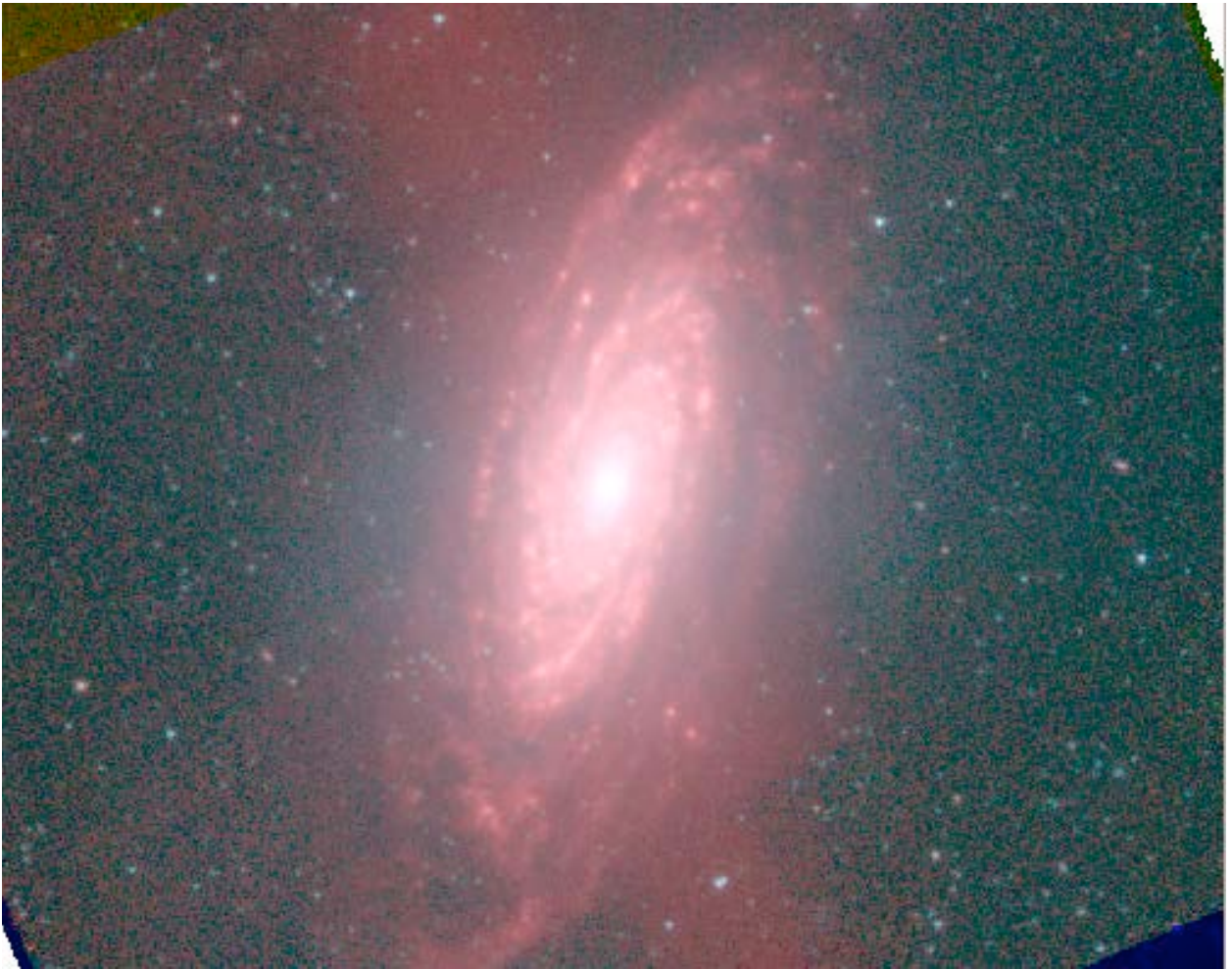
GALAXY #9



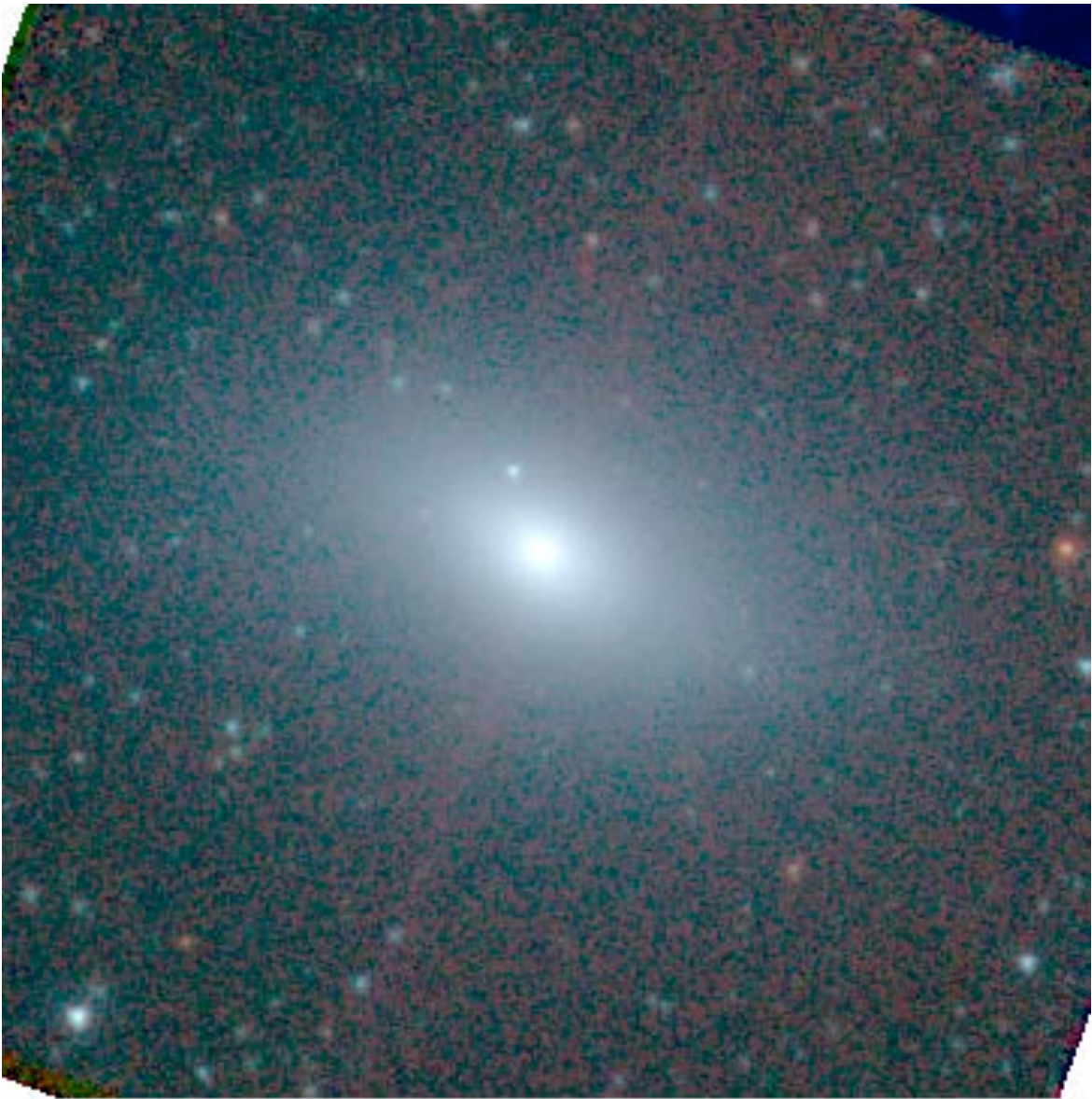
GALAXY #10



GALAXY #11



GALAXY #12



GALAXY #13



GALAXY #14



GALAXY #15



GALAXY #16



GALAXY #17



GALAXY #18



GALAXY #19



GALAXY #20

